

PRIMO[®]

INNOVATIVE ELECTRICAL
INSTALLATION MATERIALS



PRIMO OVER A TROER

PRIMO[®]

PRIMO



WHO WE ARE

About Primo

Primo has set itself the goal of revolutionising the manual trades with innovative products. In doing so, we are ensuring that work on the building site is fun and profitable again, because our heart beats for electrical installation. Having arisen from a family-owned electrical installation business, we know the problems at first hand – after all, we have experienced the daily hard work ourselves.

How often have we had to carry sacks of plaster up to the third floor or sprained our fingers when wiring? At that time, large subsequent payments on account of search drilling prompted us to develop the first ideas of our own in order to prevent repetitions.

Once our own creations had proven to make perfect sense, we really wanted to share them with the industry. The reaction was consistently positive.

On account of our experience, you will only find products in our range that we would use ourselves and that provide genuine added value! Our time-saving innovations, which can be used several times and are easy to handle, will help you to counteract the shortage of skilled labour.

Not only that, in us you gain a partner who listens to you and understands your problems. Our service extends far beyond the sale of products.



CONTENTS

INHALTS- VERZEICHNIS

Installation	6
Thermo boxes	8
Universal plaster cover	16
Equipment carriers	17
Multi box	18
Cable holder	20
Primo clip	22
Concrete construction	24
M-series membrane boxes	26
CEE box	30
Universal junction box with membrane	34
Concrete box 2.0	36
Concrete wing box 2.0	37
Installation housings	38
XL-series Installation housing	40
Uni-Flexx for XL 150	44
XL-series: Accessories	46
End and transition grommets	50
Wall and ceiling transitions	51
C-series Wall and ceiling transitions	54
C-series Sleeves and grommets	55
Tools	56
Bohr-Fixx	57
Drilling templates	58
Ladder sock	58
High-speed drill	59
Nailer	60
Pull line blower	61
List of keywords	62
List of article numbers	64
General Terms and Conditions of Business	66

01

INSTALLATION



THE WORLD'S FASTEST FLUSH-MOUNTING SYSTEM

The Primo Thermo box



FAST INSTALLATION

True to our motto: „Setting boxes is a thing of the past!“ Thanks to the unique Quick Installation System (QIS), Primo offers you installation time savings of up to 70%.

SOUND PROTECTION

The innovative sound protection solutions from Primo meet the structural requirements for sound protection walls with built-in electrical installations.

AIRTIGHT

With its new Thermo box, Primo disproves the theory that airtight installations are only possible by means of membranes in the box. The innovative QIS system automatically seals all voids and thus guarantees an airtight installation.

THERMAL BRIDGE-FREE

With the introduction of the new EnEV (German Energy Saving Regulations), the requirements for the saving of primary energy in new buildings have been considerably tightened. These problems are solved practically and in a time-saving way with the new Primo Thermo box by foaming the box.

THERMO BOXES

The original

4-in-1 areas of application:

- + Fast installation
- + Sound protection
- + Thermal bridge-free
- + Airtight

SCS connection technology

- + Permanent connection
- + Easy through-wiring
- + Simple installation of pre-wired devices

Plaster stop

- + Guaranteed 10 mm plaster thickness according to DIN ISO VDE 18550
- + Easy to break off
- + Set flush with the masonry (also for old buildings)



Membrane technology

- + Combination entry for conduits up to M25 without tools
- + Insertion of (earth) cable is possible
- + 16 entries, including 6 combination entries
- + 5 combination entries up to M25
- + 1 combination entry up to M20
- + 8 entries up to M12
- + 2 entries up to M15
- + 10 cable entries up to 12 mm

Innovative foaming technology

- + Fast installation by foaming

Membrane teeth

- + Compensate unevenness in the drill hole
- + Centre the Thermo box



Designation	Article no.	PU	OC	PL	Price unit	Price in €
Thermo box THD-70	P726	25	100	2.400	100 pcs	343,59
Thermo box THD-45	P774	25	100	3.200	100 pcs	321,98
Thermo box TED-70	P775	10	100	1.000	100 pcs	1.166,91

Accessories for the Thermo box system	Article no.	PU	OC	PL	Price unit	Price in €
Universal plaster cover	P722	100	500	12.000	100 pcs	36,68
Thermo foam 750 ml	P717	1	12	840	1 pc	25,98
Drilling template flush-mounting Ø 82 mm	P718	1	1	144	1 pc	190,90
Pistol for Primo Thermo foam	P719	1	40	560	1 pc	44,84
Equipment carrier GET-80	P773	25	150	4.800	100 pcs	153,58

Dimensions	THD-70	THD-45	TED-70
Depth	68 mm	46 mm	68 mm
Width with plaster stops	105 mm	105 mm	105 mm
Length	73 mm	73 mm	145 mm
Installation opening	60 mm	60 mm	60 mm or 2x 60 mm
Drill hole size	82 mm	82 mm	2x 82 mm, breakout web
Membran entries	8x M12 with cable-plopp; 2x M15 with cable-plopp; 1x M15/M20 with cable-plopp; 5x M15/M20/M25 with cable-plopp	1x entry up to M20; 5x entries up to M25	8x cable entries M12; 2x entries up to M20; 4x entries up to M25; 2x entries up to M32
Membrane entries from the rear	8x M12 with cable-plopp;	2x M12	2x M15; 1x M15/M20/M25

Use

Scan or click for further information



THERMO BOX

Are you still plastering or are you already foaming?



Suitable for limestone block, aerated concrete, brick, concrete and all other types of masonry.



The Thermo box system consists of three parts: the Thermo box (THD-70), the flat Thermo box (THD-45) and the Thermo electronics box (TED-70). All parts can be combined with one another thanks to the SCS connection technology.

Installation instructions overleaf →

Installation instructions

Scan or click
for further
information



THERMO BOX THD-70



1. Mark the first box and drill with Primo High-speed drill and 82 mm holesaw.



2. For multiple combinations, insert the Drilling template in the first hole. Tighten the lever and align it using the integrated spirit level. Any number of further holes can be drilled at the standard spacing of 71 mm by moving the template.



7. The membrane teeth fix the box firmly in the hole before foaming. Thermo boxes can thus be preassembled with the conduits and then foamed.



8. Attach the convex plaster cover to the opening of the box to protect the screw bosses and the inside of the box, and to reduce the plaster application.



3. Insert the boxes up to the plaster stop. A standard-compliant and flush-mounted installation is thus ensured.



4. Using the Foam pistol, inject the foam through the opening in the rear of the box until the box is completely enclosed, airtight and thermal bridge-free. After 20-30 minutes, the foam is cut-resistant.



9. Signal pins ensure quick location. Push the cover in with your finger or screwdriver. When it pops outwards, a clean contour is created without offsets in the plaster. Then remove the cover.



10. Alternatively, expose the plaster cover with a 68 mm holesaw and remove it.



5. Pierce the cable-plopp with the cable and thus insert the cable entirely without tools.



6. Alternatively, open the membrane with the cutter.



11. Break out the SCS connecting web if necessary.



12. Now simply wire the devices or install them pre-wired.

Installation instructions

Scan or click
for further
information



THERMO BOX

The right flush mounting box for the renovation of every old building



1. The membrane teeth fix the boxes securely in the hole. This enables the time-saving installation of boxes that have already been preassembled with conduits..



2. Insert the boxes up to the plaster stop. A standard-compliant and flush-mounted installation is thus ensured.



3. With a plastered wall, simply break off the plaster stop and insert the box fully.



4. Use the Foam pistol to break out the predetermined breaking point in the rear of the box and inject the foam until the box is completely enclosed. After 30 minutes, the foam is cut-resistant.



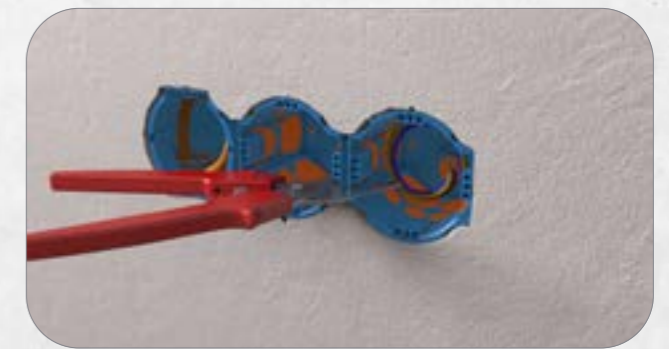
5. Pierce the cable-plopp with the cable and thus insert the cable entirely without tools.



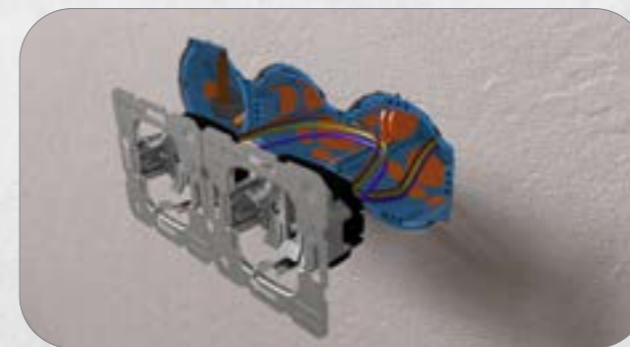
6. Signal pins ensure quick location. Push the cover in with your finger or screwdriver. When it pops outwards, a clean contour is created without offsets in the plaster. Then remove the cover.



7. Alternatively, expose the plaster cover with a 68 mm hole saw and remove it.



8. Break out the SCS connecting web if necessary.



9. Now simply wire the devices or install them pre-wired.



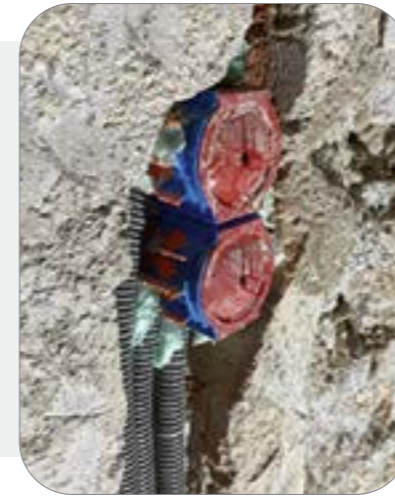
10. Complete the installation – done!

BUILDING SITE



CUSTOMER EXPERIENCES

from the building site



ELEKTRO-ENGELHARD GMBH

Sven Ammenhäuser, manager

□□ In old building projects, the condition of the walls varies a great deal. Whether adobe, brick or other types: we can really use the Thermo box in any type of masonry. That makes the work much easier for the fitter. It's faster and the work is much more pleasant. Nobody likes plastering. □□

GERSTL ELEKTRO

Klaus Patzelt, manager under trade law

□□ It saves us a crazy amount of time and it's very simple to handle. Thanks to the plaster stop, the same distance for the required plaster is always automatically dictated to the fitter – entirely without measuring. Errors are thus ruled out and we don't need to use compensation rings or the like. □□

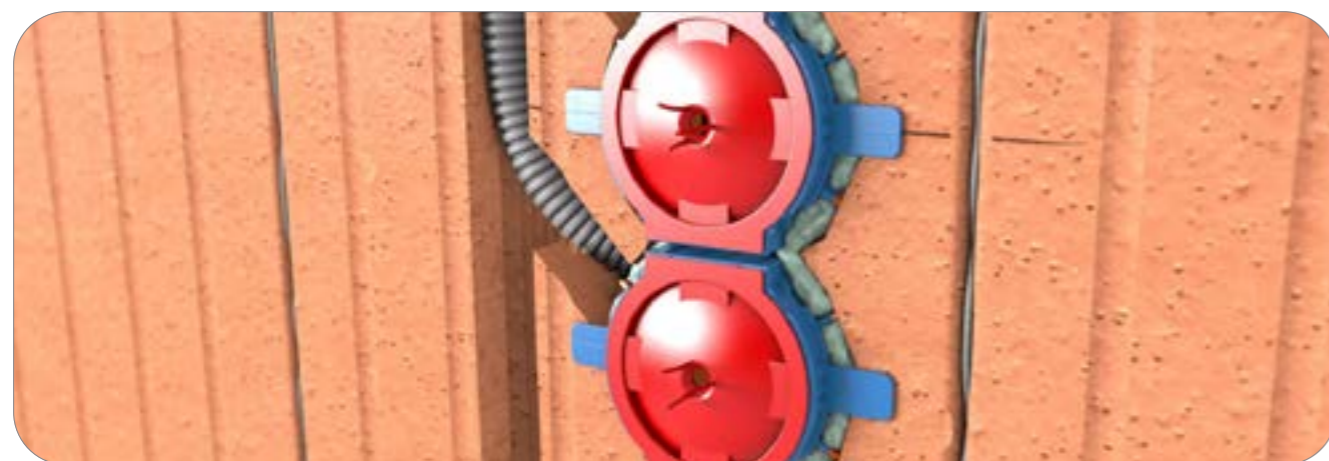


Scan or click for further information



UNIVERSAL PLASTER COVER

No more plaster in the switch box



UNIVERSAL SIZE

The standardised shape makes the plaster cover a reusable helper that fits all standard Flush mounting boxes. The lateral tabs also protect the screw bosses.

SIMPLY POP

The cover can be pressed inwards by hand after plastering. It pops out again, is free from plaster and there are clean contours without plaster breaking off.

CENTRING HOLE

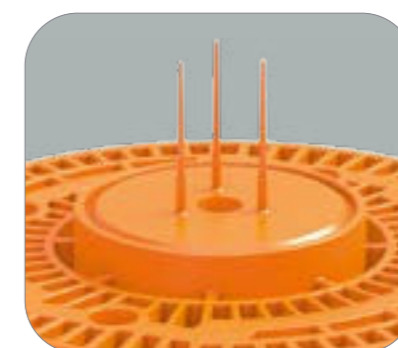
Place the drill with a 68 mm holesaw in the centring hole and mill out the box with clean contours.

Designation	Article no.	PU	OC	PL	Price unit	Price in €
Universal plaster cover UP	P722	100	500	12,000	100 pcs	36.68

Universal plaster cover dimensions			
External diameter	65.5 mm	Overall height	24 mm
Internal diameter	60 mm	Height up to cover curvature	8.5 mm

EQUIPMENT CARRIERS

The plastered-in dowel – no more drilling



FASTENING WITH SCREWS

Screws are fixed directly and drilling is eliminated, therefore there is no cable damage or consequential costs. Optimum size of the screws is 4 x 35, alternatively also ≤ 3 x 25.

SIGNAL PIN

Easy to find even after plastering thanks to signal pins. After plastering, the 35 mm predetermined breaking point is opened using the centring hole and a 35 mm holesaw or a hammer.

MOUNTING SURFACE

84 mm mounting surface for installation of lamps or devices without dowels. Usable for all Thermo box or M-series products.



Designation	Article no.	PU	OC	PL	Price unit	Price in €
Equipment carrier GET-80	P773	25	150	4,800	100 pcs	153.58

GET-80 dimensions			
Diameter	84 mm	Screw length depending on plaster application	max. 25 mm
Depth	30 mm	Integrated screw bosses	4
Luminaire outlet	35 mm		

MULTI BOX

The allrounder for old building renovation, flush mounting and plasterboard

Advantage for all trades

- + Electrician: no searching
- + Technical planner: no cost distribution
- + Drywaller: no filling work
- + Building owner: Quality (no scratched car)

Plaster equalisation in old buildings

Flush with plaster as per VDE



For old building renovation, flush mounting, drywall and cavity walls

Time and cost savings

- + No searching for boxes and cables → No expensive search drilling
- + Just a single measurement

Fast installation

ACCESSORIES



Signal pin

Drill cover



Designation	Article no.	PU	OC	PL	Price unit	Price in €
Multi box	P002	25	100	2,400	100 pcs	128.83
Drill cover	P003	25	500	12,000	100 pcs	128.83
Signal pin	P004	25	5,000	120,000	100 pcs	21.62
Adhesive disc	P005	25	500	56,000	100 pcs	46.85

Dimensions			
Installation opening	60 mm	Drill cover diameter	72 mm
External diameter of lower part	69 mm	Drill cover edge depth	6 mm
External diameter of upper part with plaster cover	66 mm	Mandrel internal diameter	6 mm
Depth (adjustable)	58 mm – 75 mm	Drill cover mandrel length	30 mm
Breakout openings for cables and conduits	20 mm/25 mm	Combination entries	6x M20 – M25

Installation instructions

Scan or click for further information



FLUSH-MOUNTED MULTI BOX



1. Set the lower part flush, insert cables or conduits. Carefully let the standard cover with interlocking teeth snap in. Allow the cover to protrude by about 2.5 – 3 cm.



2. The plasterer pushes the cover to the required height during plastering – guaranteed flush and VDE-tested! Remove the signal pins and mill out the box cover with the help of the centring hole.

CAVITY WALL MULTI BOX



1. Adhere the Adhesive disc to the underside of the Multi box and peel off the film. Adhere the box in the desired place. Insert cables and conduits. Fit the drill cover.



2. Install insulating wool. Option 1: Attach plasterboard and press the tip through. Option 2: Press the plasterboard on and tap in a hole in the marked place with a hammer. Then attach the plasterboard so that the mandrel sticks through the hole.



3. Mill out the hole. The mandrel serves as the centring hole. Remove the drill cover. Push the upper part of the box on and press it flush with the plasterboard.



4. Break out the cover with a hammer. Complete the installation.

CABLE HOLDER

The marking professional

Centring mandrel

- + Easy puncturing of insulation and second dry wall
→ Placement of the box is clearly visible

Advantages for all trades

- + Electrician: no searching
- + Technical planner: no cost distribution
- + Drywaller: no filling work
- + Building owner: Quality (no scratched car)

Time and cost savings

- + No searching for boxes and cables
→ No expensive search drilling
- + Just a single measurement

Unplanned sockets are easy to find

Adhesive surface already integrated

BUILDING SITE EXAMPLES



Designation	Article no.	PU	OC	PL	Price unit	Price in €
Cable holder incl. Adhesive disc	P001	50	50	4,500	100 pcs	177.39
Adhesive disc	P005	25	500	56,000	100 pcs	46.85

Additional articles for Cable holders	Article no.	PU	OC	PL	Price unit	Price in €
Drilling template for Cavity wall box	P102	1	48	1,152	1 pc	65.29

Dimensions				
Fastening base plate diameter		60 mm	Mandrel external diameter	10 mm
Fixing hole internal diameter		6 mm	Mandrel length	135 mm
Adhesive disc diameter		60 mm	Holding bracket height	45 mm

Installation instructions

Scan or click for further information



CABLE HOLDER

Been looking for cables? Wall destroyed? Not with our marking pro!



1. Adhere the Adhesive disc to the Cable holder and peel of the protective film. Fasten the Cable holder to the dry wall and feed cables or conduits through the brackets.



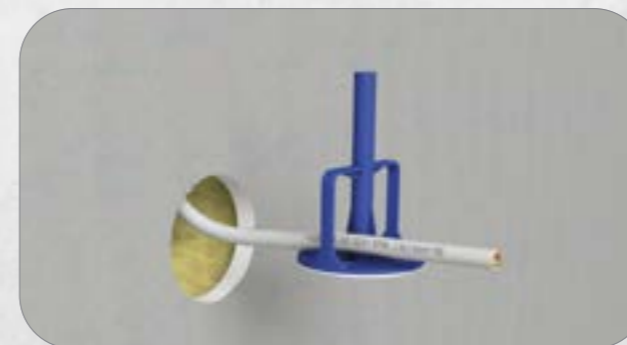
2. Push an angled mandrel through the second plasterboard or tap in a hole with a hammer beforehand.



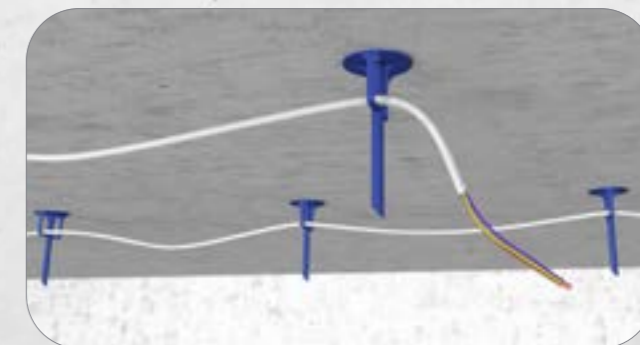
3. Pinch off the Cable holder flush with the wall.



4. Place the box miller in the centring hole and mill out the hole.



5. Pull the Cable holder with fixed cables or conduits out of the opening. Mount the Cavity wall box and install the built-in device or socket.



Simple alternative for ceiling mounting for cable routing: adhere - done!

Scan or click for further information



PRIMO CLIP

Fastening of conduits and cables in seconds without tools

Benefits

- + Fastening of conduits and cables without tools
- + For conduits and cables
- + Usable in all types of masonry
- + For several conduits at the same time



BUILDING SITE



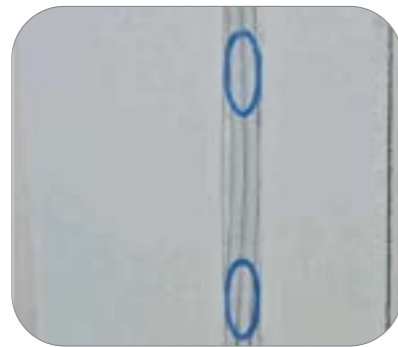
CUSTOMER EXPERIENCES

from the building site



ESPECIALLY FOR NARROW SLOTS

Suitable for old buildings and particularly narrow slots. Simply mount longitudinally with narrow slots.



WIDE RANGE OF USES

Suitable for brick, old buildings, aerated concrete, limestone block, concrete and all other types of masonry. Also usable with wall slots up to 50 mm.



SEVERAL CABLES CAN BE FIXED

Several conduits or cables can be fixed with one clip. Nailing plates or other constructions are thus made redundant.

AVHZ GMBH

Christoph Steinberger, manager

“ The equipment carrier saves an unbelievable amount of time, because the installation of lamps is much simpler and faster. I no longer have to drill any holes. ”



Designation	Article no.	PU	OC	PL	Price unit	Price in €
Primoclip	P076	100	5,000	60,000	100 pcs	16.28

Dimensions						
Length	60 mm	Width	30 mm	Thickness		4 mm

02



CONCRETE

CONCRETE BOXES

The multitalents in concrete



ELECTRONICS BOX

70% more installation space – and thus room – in the box.

MULTIFUNCTIONAL

One Concrete box for many applications! Switch box with and without wings, Electronics box, Ceiling box, also usable for fair-faced concrete.

MEMBRANE ENTRIES

The membrane ensures a concrete-tight conduit entry without tools. Requirements for sound protection walls with built-in electrical installations.

FAST INSTALLATION

Fast insertion of conduits and cables up to 32 mm; just slit the membrane open with the knife, insert the conduit – done!

M-SERIES MEMBRANE BOXES

Junction box, Concrete wing box, Ceiling junction box, Large conduit box and Electronics box

Membrane technology with conduit grip

- + Combination entries without tools for cables and conduits from M15 - M32
- + Perfectly concrete-tight
- + Reliably strain-relieved

Large conduit entry M32

- + Pulling in of pre-assembled cables

Push-on wings

- + For fastening to steel reinforcement
- + Standard distance to door formwork 15 cm
- + Concrete cover from 20 – 60 mm
- + No counter bearing or support element necessary

Membrane sealing lip

- + Clean finish
- + Ideal for fair-faced concrete
- + Prevents the ingress of concrete slurry

SCS connection technology

- + Stable in-line connection
- + Combination spacing 71 mm
- + Easy through-wiring
- + Simple installation of pre-wired devices



Designation	Article no.	PU	OC	PL	Price unit	Price in €
Membrane box M1 60	P760	50	50	1,400	100 pcs	398.41
Membrane box M1 35 (with 35 mm luminaire outlet)	P763	50	50	1,400	100 pcs	443.51
Membrane box M2 60	P914	50	50	1,800	100 pcs	346.91
Membrane box M2 35 (with 35 mm luminaire outlet)	P915	50	50	1,800	100 pcs	346.91
Membrane box M3 60	P912	50	50	2,700	100 pcs	323.57

Additional articles for Membrane box	Article no.	PU	OC	PL	Price unit	Price in €
Wings for M and XL series	P761	50	500	12,000	100 pcs	60.10
Push-on frame for Membrane box M1	P762	50	200	4,800	100 pcs	153.58
Nailer for concrete construction products	P752	1	10	240	1 pc	216.30
Equipment carrier GET-80	P773	25	150	4,800	100 pcs	153.58

Dimensions	M1	M2	M3
Length	110 mm	90 mm	90 mm
Width	75 mm	75 mm	75 mm
Depth	85 mm	68 mm	48 mm
Wingspan	300 mm	280 mm	280 mm
Lateral membrane entries	2x M15; 4x M15/M20/M25; 2x M15/M20/M25/M32	6x M15/M20/M25	6x M15/M20/M25
Membrane entries from the rear	6x M15/M20/M25; 2x M12	1x M25/M32; 2x M12	1x M25/M32; 2x M12

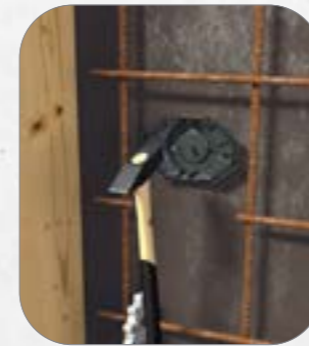
Installation instructions

Scan or click for further information

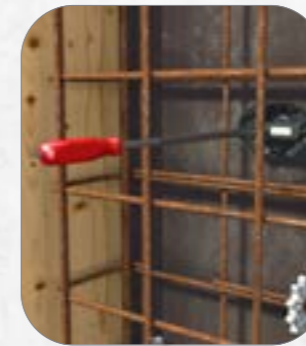


MEMBRANE BOXES

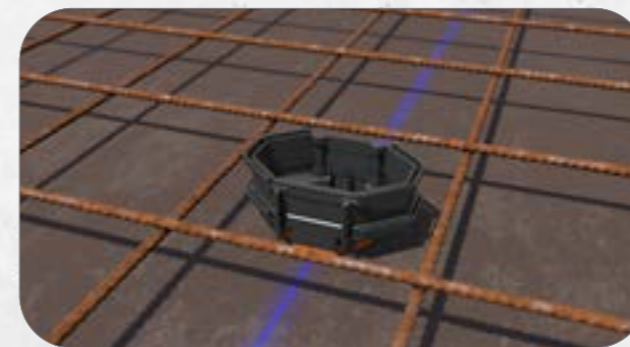
Wall/ceiling mounting: nail to the formwork



1. Attach the cover of the membrane box to the wall or the ceiling in the marked place with nails. If the reinforcement has already been installed, the Primo Nailer helps with simple and injury-free fastening.



2. The integrated nail holder in the Front part enables simple installation. Fasten the Front part to the formwork with nails. Attach steel reinforcement.



3. Push the push-on frame onto the membrane box M1 for flexible extension and more installation space. Place the membrane box.



4. Cut the membrane with a cutter knife.



5. Insert conduits as desired without additional tools. The membrane technology ensures a perfectly concrete-tight seal.



6. No shortening of conduits necessary thanks to reliable strain relief by conduit grip.

Installation instructions

MEMBRANE BOXES

Wall mounting: With wings (P761)



1. Push wings onto the membrane box M1, M2 or M3. Wings set the 15 cm standard distance to door formwork and enable easy mounting. Fasten the wings to the steel reinforcement with wire.



2. Flexible Wings adapt themselves to the respective concrete cover. Concrete covers of 20 – 40 mm or 40 – 60 mm. Concreting can take place after placement of the opposing formwork.



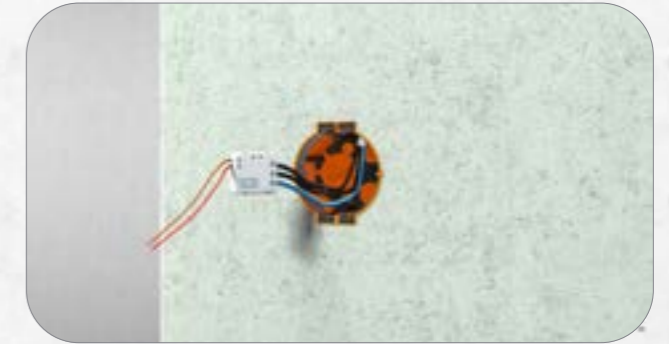
Installation instructions

MEMBRANE BOXES

Installation after concreting



1. After concreting, the cover can be opened with a hammer blow.



2. Usable as an electronics box due to octagonal shape.



3. Thanks to the flexible membrane skin, device screws can easily be inserted.



4. If necessary, remove the SCS connecting web effortlessly with the Primo Box cutter.



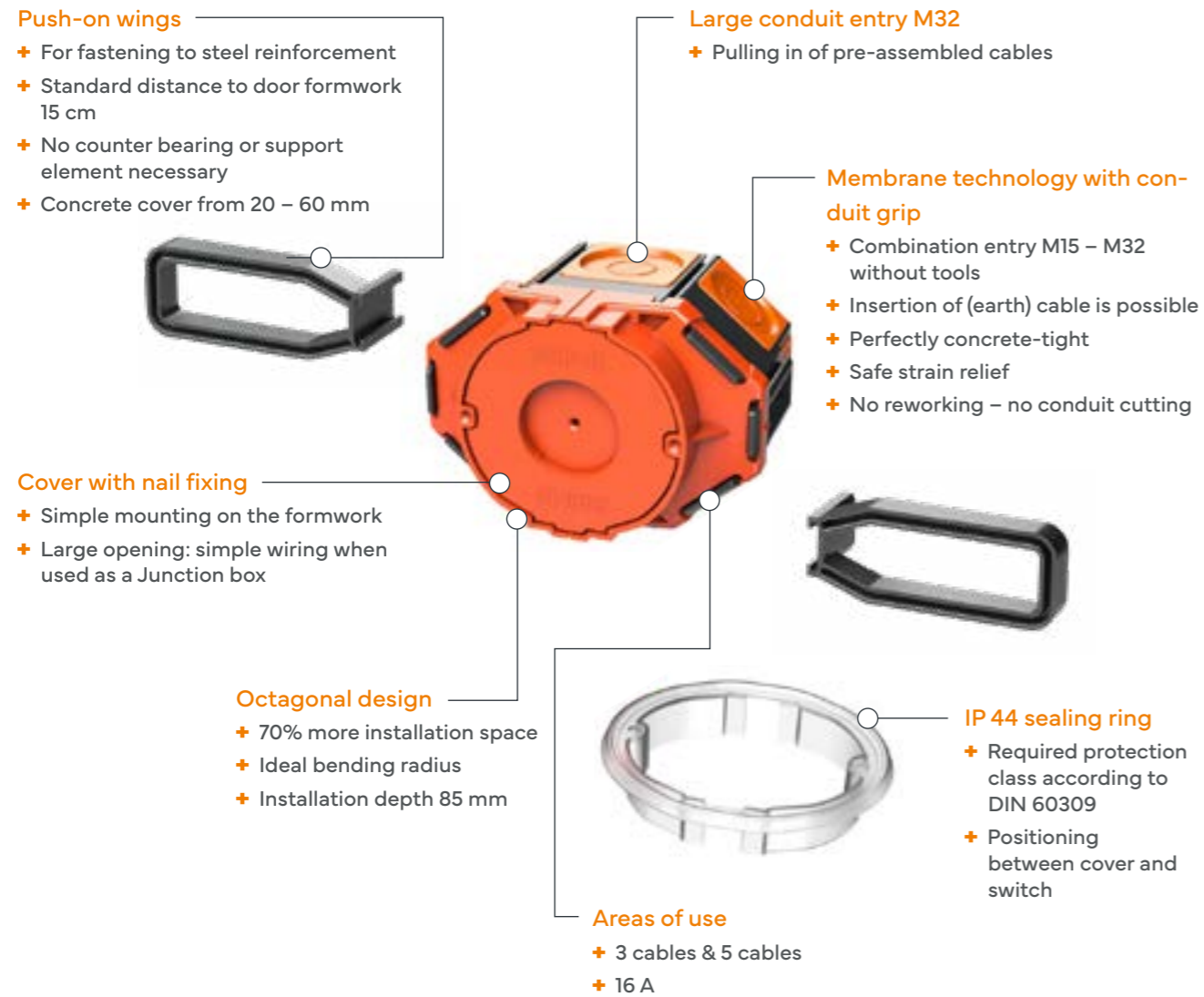
5. Prefabricated lines can be installed through large conduit entry M32.



6. Ceiling installation: Ceiling hook holder according to EN 60670.

CEE BOX

The lightning-fast three-phase installation



Designation	Article no.	PU	OC	PL	Price unit	Price in €
Membrane box M1 CEE	P953	10	10	1,260	100 pcs	1,158.73

Dimensions	M1 CEE
Length	110 mm
Width	74 mm
Depth	85 mm
Wingspan	300 mm
Installation opening	70 mm
Lateral membrane entries	2x M15; 4x M15/M20/M25; 2x M15/M20/M25/M32
Membrane entries from the rear	2x M15/M20/M25; 2x M12

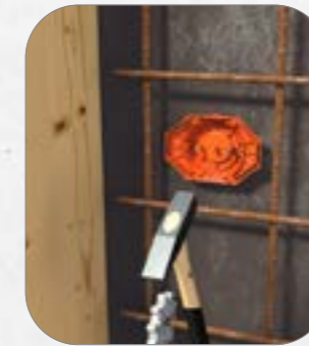
Installation instructions

Scan or click for further information



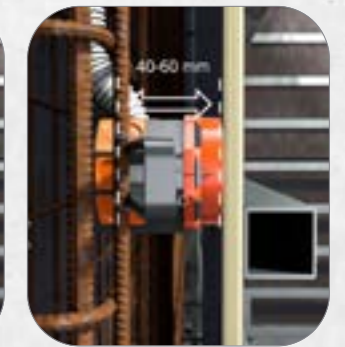
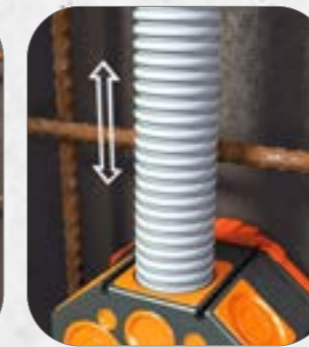
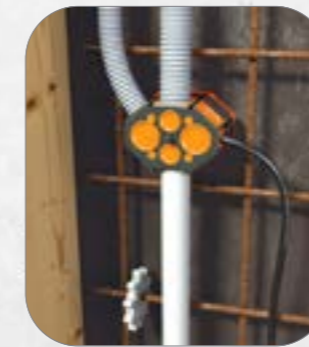
CEE BOX

Cover – box – sealing ring



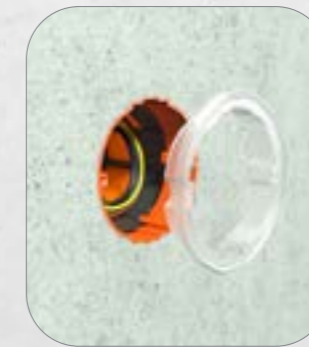
1. Variant 1: Nail the Front part to the formwork. The integrated nail holder in the Front part enables simple installation (l). Variant 2: Push the push-on wings onto the Membrane box and fasten to the steel reinforcement with wire (r).

2. Open the membrane with a cutter knife. Large conduit entry M32.



3. Insert cables or (rigid) conduits M20, M25 and M32. Perfectly concrete-tight entries due to membrane technology (l). No shortening of conduits necessary thanks to reliable strain relief by conduit grip (r).

4. Flexible wings adapt themselves to the respective concrete cover of 20 – 40 mm or 40 – 60 mm.



5. Simple opening with a hammer blow after concreting.

6. Seal prevents the penetration of moisture. Easy installation of CEE flush-mounted sockets.

BUILDING SITE



CUSTOMER EXPERIENCES

from the building site



ELEKTRO JANEL

Samuel Filicko, Monteur

▭▭ For me, the octagonal shape of the M-series took a bit of getting used to at first. However, it gives me the option of installing many different components without breaking my fingers. ▭▭

KLENK & MEDER ELEKTROTECHNIK

Matthias Bürgmayr, chief fitter

▭▭ The membrane technology is a big highlight of the boxes. I no longer need any punching tools and the conduit holds very well and doesn't slip out. The boxes are therefore much more practical as regards the speed, function and simplicity of the application. In addition, they can be plugged together very easily. ▭▭



UNIVERSAL JUNCTION BOX WITH MEMBRANE

Quickly installed with lots of installation space



- Optional dividing web**
 - + Two isolated circuits possible
- Large conduit entry M32/M40**
 - + Pulling in of pre-assembled cables
- Flexible mounting option**
 - + Compatible with Uni-Magnet „hafti“
 - + DOM magnet
 - + Nail guide
 - + Gluing
- Membrane technology with conduit grip**
 - + Combination entry M20 – M40 without tool
 - + Perfectly concrete-tight
 - + Safe strain relief
 - + No reworking – no conduit cutting
- Push-on wings**
 - + For fastening to steel reinforcement
 - + Standard distance to door formwork 15 cm
 - + No counter bearing or support element necessary
 - + Concrete cover from 20 – 60 mm
- Front parts in various sizes**
 - + 60 mm / 70 mm
 - + Three-part for simple and fast installation
 - + With and without magnet



Designation	Article no.	PU	OC	PL	Price unit	Price in €
Universal junction box for concrete (without membrane)	P421	50	50	1,200	100 pcs	324.57
Universal junction box U60 3-part	P421-60-3	50	50	1,200	100 pcs	666.67
Universal junction box U70 3-part	P421-70-3	50	50	1,200	100 pcs	666.67

Accessories for Universal junction box	Article no.	PU	OC	PL	Price unit	Price in €
Nailer for concrete construction products	P752	1	10	240	1 pc	216.30
Wings for M and XL series	P761	50	500	12,000	100 pcs	60.10
Dividing web for Universal junction box U60/ U70	P421-T	50	500	16,000	100 pcs	130.95

Dimensions			
Diameter	100 mm	Installation depth	111 mm
Installation diameter	60 mm	Depth incl. cover	120 mm

Installation instructions

Scan or click for further information



UNIVERSAL JUNCTION BOX

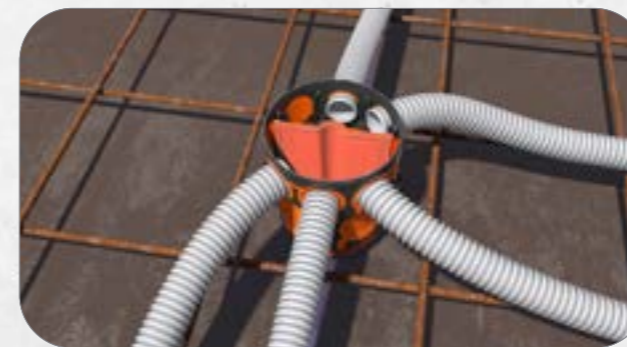
Cut, insert, strain-relieved!



1. Nail the Front part to the formwork. Ideal for installation situations with lots of reinforcement due to low installation height. Place the box on the Front part.



2. Open the membrane with a cutter knife. Perfectly concrete-tight entries due to membrane technology.



3. Insert cables or (rigid) conduits M40 without tools. Reliable strain relief due to conduit grip. Optional dividing web for two isolated circuits in one box.



4. Close the box with the cover and concrete the ceiling. Tap in the Front part with a hammer after concreting.



5. Ceiling hook holder according to EN 60670.



6. Use as a Junction box with lots of installation space.

Scan or click for further information

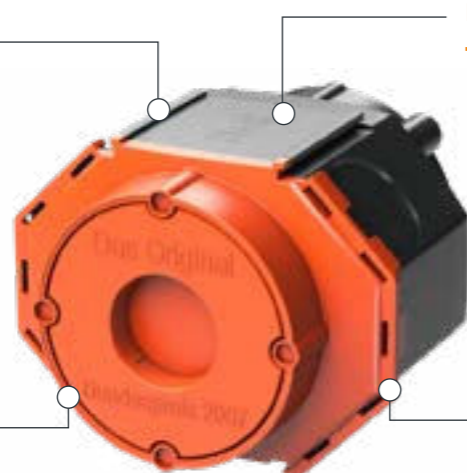


CONCRETEBOX 2.0

The classic space wizard

SCS connection technology

- + Permanent connection
- + Easy through-wiring
- + Simple installation of pre-wired devices
- + Combination spacing 71 mm



Large conduit entry up to M32

- + Pulling in of pre-assembled cables

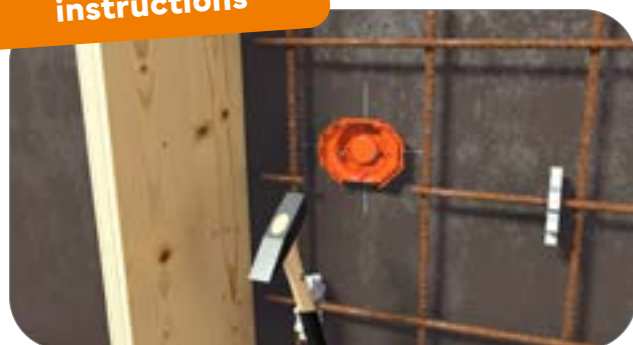
3-in-1:

- + Junction box, M32 Large conduit box and Electronics box

Octagonal design

- + Usage as Electronics box
- + 70% more installation space
- + Ideal bending radius
- + + Installation depth: 90 mm

Installation instructions



Precise alignment due to integrated markings on the cover. The integrated nail holder in the cover enables simple installation. Stable stringing together of further covers in the combination spacing of 71 mm possible.



Punch holes for installation conduits M20/M25 with punch pliers. Drill holes for installation conduits M32 with a step drill. Insert installation conduits. M20/M25 and large conduit entry M32 possible.



Designation	Article no.	PU	OC	PL	Price unit	Price in €
Concrete box 2.0	P731	50	50	1,200	100 pcs	231.65

Additional articles for Concrete box 2.0	Article no.	PU	OC	PL	Price unit	Price in €
Nailer for concrete construction products	P752	1	10	240	1 pc	216.30

Dimensions			
Diameter	60 mm	Length / wingspan	110 mm
Installation depth	90 mm	Wing height	-
Installation opening	60 mm	Width	70 mm
Entries	6 pipe / cable entries up to M25, of which 2 conduit entries up to M32 are possible		

Scan or click for further information



CONCRETE WING BOX 2.0

The classic space wizard with wings

4-in-1:

- + Junction box, Concrete wing box, M32 Large conduit box and Electronics box



Wings

- + For fastening to steel reinforcement
- + Standard distance to door formwork 15 cm
- + No counter bearing or support element necessary
- + Concrete cover from 20 – 60 mm

Installation instructions



Punch holes for installation conduits with punch pliers or drill them with a step drill. Insert conduits M20/M25 or M32. The wings set the standard distance to the door formwork of 15 cm.



The Concrete box can be rotated by 180° for different concrete covers. Fasten the wings to the steel reinforcement with wire. Flexible Wings adapt themselves to the respective concrete cover.



Designation	Article no.	PU	OC	PL	Price unit	Price in €
Concrete wing box 2.0	P730	50	50	1,000	100 pcs	337.67

Additional article for Concrete wing box 2.0	Article no.	PU	OC	PL	Price unit	Price in €
Nailer for concrete construction products	P752	1	10	240	1 pc	216.30

Dimensions			
Diameter	60 mm	Length / wingspan	300 mm
Installation depth	90 mm	Wing height	38 mm
Installation opening	60 mm	Width	70 mm
Entries	6 pipe / cable entries up to M25, of which 2 conduit entries up to M32 are possible		

03



INSTALLATION HOUSINGS

XL-SERIES INSTALLATION HOUSING

The allrounder for individual requirements



AWARD-WINNING QUALITY

The smart technology of the XL-series has won the Red Dot Award among others. Apart from design aspects, it was above all the functionality, innovation and product quality that were decisive for the awards.

INDIVIDUALLY USABLE

Thanks to various Front parts in a square (68 – 75 mm) or round (68 – 180 mm) form or with Mineral fibre board (145 – 195 mm) for individual cut-outs, the XL-series is suitable for every conceivable area of application.

MEMBRANE TECHNOLOGY

The membrane completely encloses the inserted conduits and cables, as a result of which the system remains perfectly concrete-tight. The integrated conduit grip guarantees reliable strain relief.

FAST INSTALLATION

The integrated nail fixation allows easy and fast mounting on the formwork. The membranes can be opened with a simple cutter within seconds. You can leave the additional punch pliers at home.

XL-SERIES INSTALLATION HOUSING

New: now with membrane technology

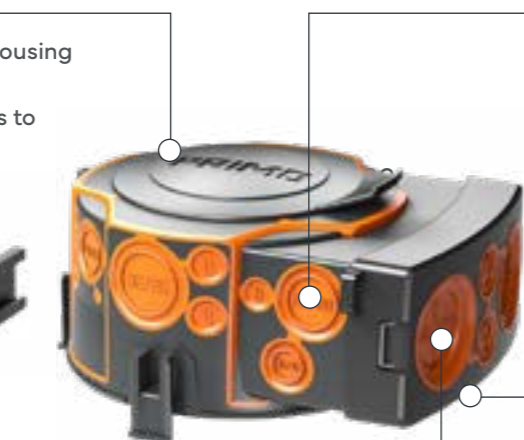
Removable cover

- + Pull cables and lines into the housing before concreting
- + Perfectly concrete-tight thanks to integrated sealing lip



Push-on wings

- + For fastening to steel reinforcement
- + Concrete cover from 20 – 60 mm



Membrane technology with conduit grip

- + Combination entry M9 to M40 without tool
- + Perfectly concrete-tight
- + Securely strain-relieved thanks to conduit grip
- + No reworking – no conduit cutting

Additional connection space

- + Suitable for electronic components, for example
- + Universal Tunnel for additional installation space optionally available

Large conduit entry M32/M40

- + Pulling in of pre-assembled cables



XL 200



XL 250



reddot winner 2022
innovative product

Designation	Article no.	PU	OC	PL	Price unit	Price in €
XL 150 Installation housing	P870	10	10	280	100 pcs	1,179.14
XL 200 Installation housing	P871	10	10	280	100 pcs	1,807.64
XL 250 Installation housing	P872	10	10	160	100 pcs	6,472.70

Dimensions	XL 150	XL 200	XL 250
Length excl. Tunnel	208 mm	251 mm	351 mm
Length incl. Tunnel	334 mm	377 mm	477 mm
Depth incl. Front part	120 mm	120 mm	138 mm
Shape	round, with short Tunnel	round, with short Tunnel	round, with short Tunnel
Installation diameter	0 – 140 mm	0 – 185 mm	0 – 285 mm
Max. installation depth	110 mm	110 mm	110 mm
Housing diameter Ø	157 mm	200 mm	300 mm
Conduit entry with membrane	4x M9 5x M11 2x M14	1x M11 4x M9	2x M14 4x M9
Combination entries with membrane	2x M12/M16; 4x M16/M20; 2x M20/M25; 2x M25/M32; 2x M12/M16 (only with short Tunnel); 2x M32/M40 (only with short Tunnel)	4x M12/M16; 4x M16/M20; 6x M20/M25; 2x M25/M32; 2x M12/M16 (only with short Tunnel); 2x M32/M40 (only with short Tunnel)	2x M12/M16; 4x M16/M20; 2x M20/M25; 2x M25/M32; 2x M12/M16 (only with short Tunnel); 2x M32/M40 (only with short Tunnel)
Max. LED lamp power	50 Watt	50 Watt	50 Watt
Max. LV/HV/TC lamp power	50 Watt	75 Watt	100 Watt

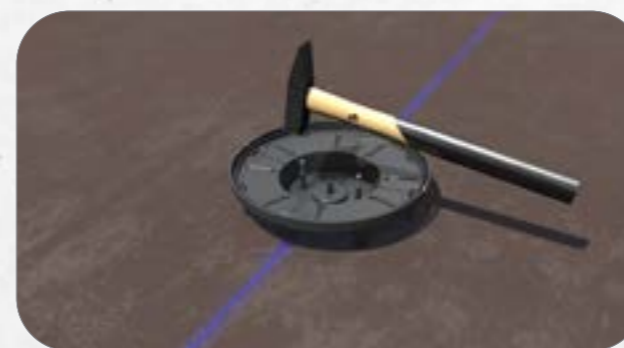
Installation instructions

Scan or click for further information



XL-SERIES: CAST-IN-PLACE CONCRETE

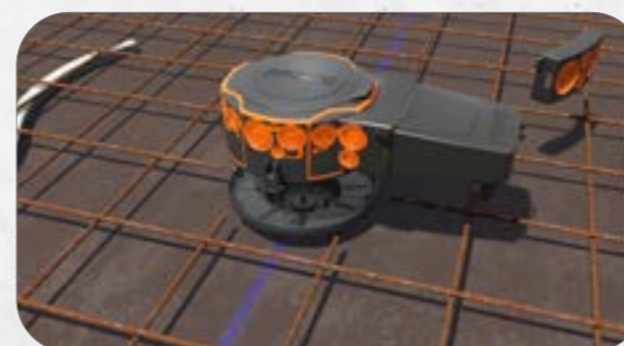
Ceiling installation: nail to the formwork



1. With the help of the integrated marking on the Front part, align the Installation housing in the precise position on the formwork. Simple and fast mounting due to integrated nail fixation. If the reinforcement has already been installed, the Primo Nailer helps with simple and injury-free fastening.



2. Alternatively, a universal Front part can be used for individual cut-outs. Various openings and shapes are possible.



3. Place the Installation housing on the Front part. The optional additional universal Tunnel offers high flexibility during installation. Subsequently, the Installation housing can still be rotated by 360°. Supports below the universal Tunnel ensure that no further reinforcement has to be cut out.



4. Open the membrane with a cutter knife. Insert cables and (rigid) conduits as desired without additional tools. Thanks to the membrane technology, the system remains perfectly concrete-tight. The combination entries offer space for conduits and cables in sizes M9 to M40.



5. The conduit stop prevents the conduit from being pushed in too far. Bothersome and time-consuming rework and shortening of the conduits are consigned to the past. This leads to more efficient consumption of conduit material in the long run.



6. The removable cover enables cables and conduits to be pulled into the Installation housing even before concreting. Thanks to the integrated membrane sealing lip, everything remains perfectly concrete-tight.

Installation instructions

Ceiling installation: Nail to formwork (continued)



7. Fasten the Installation housing to the reinforcement for additional security.



8. No air inclusions and cluster formation thanks to ventilation slits. The XL series is thus ideally suited for fair-faced concrete.



9. The ideal thermal management in the Installation housing guarantees optimal air circulation. This prevents a build-up of heat in the device, even when using the additional Tunnel.



10. Simple opening of the Front part with a hammer blow after concreting.



11. Alternative: universal Front part for individual cut-outs. Various openings and shapes are possible.



12. Install any built-in devices such as luminaires or loudspeakers.

Wall mounting: With wings (P761)



1. Fasten the Push-on wings to the housing. Fasten the wings to the steel reinforcement with wire.



2. Open the membrane with a cutter knife. Combination entry of cables and (rigid) conduits from M9 - M40 without tools. The membrane technology guarantees absolute concrete-tight entries.



3. A third wing can be mounted for additional hold.



4. Flexible wings adapt themselves to the respective concrete cover. Concrete covers of 20 - 40 mm or 40 - 60 mm are possible. Concreting can take place after placement of the opposing formwork.



5. Open the Front part with a hammer blow after demoulding.



6. Install any built-in devices such as luminaires or loudspeakers.

UNI-FLEXX FOR XL 150

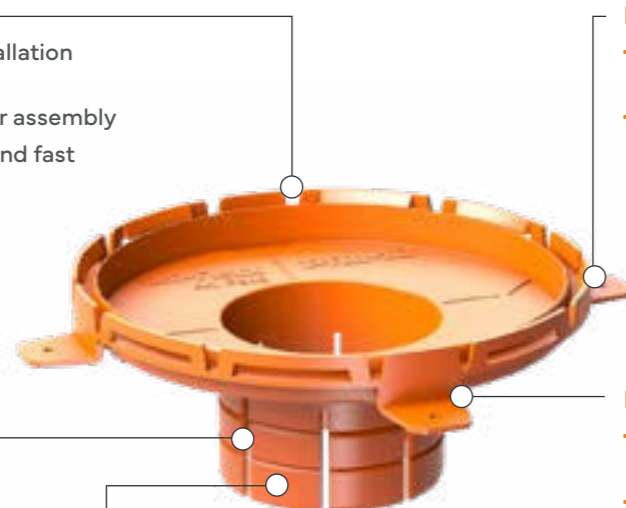
Greater flexibility in concrete construction and innovation for insulated hollow ceilings

SMR rail

- + Firmly connected to the Installation housing
- + Can still be aligned 360° after assembly
- + Time savings due to simple and fast assembly

Installation segments

- + Individually adaptable to the ceiling thickness (10 – 50 mm)
- + Can be shortened in cm steps
- + Greater installation flexibility



Mounting tabs

- + Guide for screws or impact anchors
- + Time savings due to simple and fast assembly

Fixing tabs

- + Fixing in the drill hole directly after insertion
- + Time savings due to simple and fast assembly

68 mm installation opening

- + Suitable for all common luminaires
- + The electrician can make the mounting opening him/herself

ACCESSORIES



XL 150 Installation housing

Tunnel

Designation	Article no.	PU	OC	PL	Price unit	Price in €
XL 150 Uni-Flexx	P948	10	10	1,000	100 pcs	2,389.60

Accessories for Uni-Flexx	Article no.	PU	OC	PL	Price unit	Price in €
XL 150 Installation housing	P870	10	10	280	100 pcs	1,179.14
XL 150/200/250 Tunnel	P873	10	10	600	100 pcs	1,662.82

Dimensions			
Diameter	195 mm	Hole diameter in wood/concrete	74 mm
Installation opening	68 mm	Ceiling thickness	10 – 50 mm

Installation instructions

Scan or click for further information



UNI-FLEXX

No expensive core drilling, no damaged insulation

Concrete



1. Make a 74 mm hole in the precast slab with in-situ topping. The Primo High-speed drill is suitable for this. Cut off installation segments as necessary in order to adapt the installation depth to the ceiling thickness. Then insert Uni-Flexx into the drill hole.

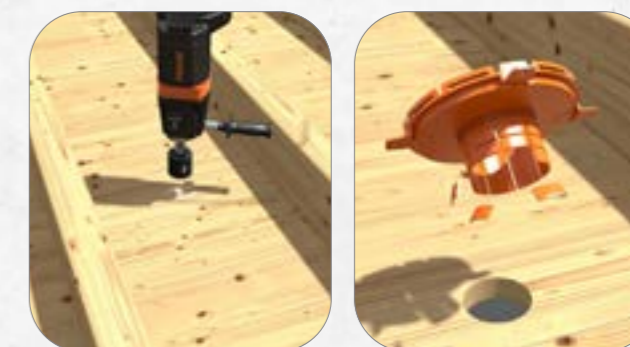


2. Drill holes through the mounting tabs and fasten Uni-Flexx to the ceiling with impact anchors. Place the XL 150 Installation housing. Open the membrane with a cutter in order to insert cables and conduits.

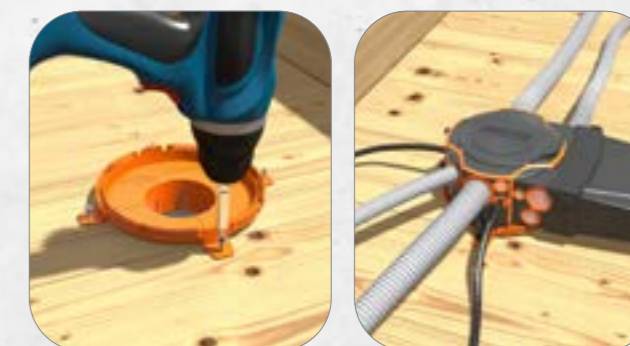


3. Connect recessed luminaires or other built-in devices from underneath and insert into the 68 mm installation opening. Done!

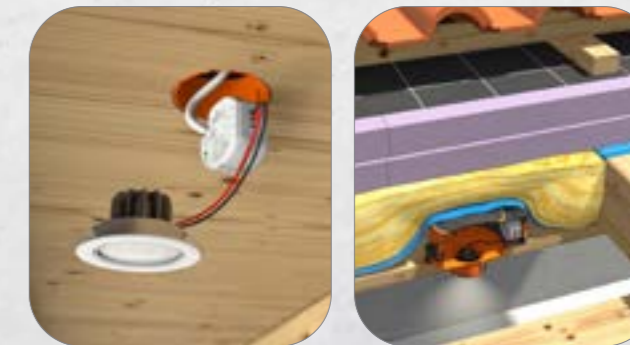
Wood



1. Drill a 74 mm hole in the visible formwork. A commercially available holesaw is suitable for this. Cut off installation segments as necessary in order to adapt the installation depth to the ceiling thickness. Then insert Uni-Flexx into the drill hole.



2. Fasten Uni-Flexx to the visible formwork with screws. Place the XL 150 Installation housing. Open the membrane with a cutter in order to insert cables and conduits.



3. Connect recessed luminaires or other built-in devices from underneath and insert into the 68 mm installation opening. Done! Installation housing and Uni-Flexx protect the insulation in the exposed loft. Energy efficiency and fire protection are thus maintained.

XL-SERIES: ACCESSORIES

The perfect supplement

Extension rings



Uni-Flexx



Universal tunnel



Front parts



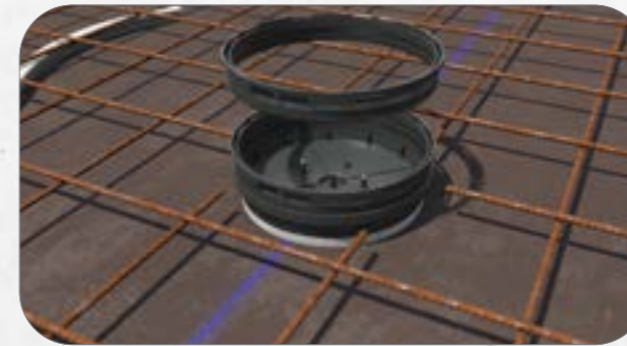
reddot winner 2022
innovative product

Accessories for the XL-series	Article no.	PU	OC	PL	Price unit	Price in €
Wings for M and XL series	P761	50	500	12,000	100 pcs	60.10
XL 150/200/250 Tunnel	P873	10	10	600	100 pcs	1,662.82
XL 150 Extension ring	P906	10	100	1,600	100 pcs	1,165.98
XL 200 Extension ring	P907	10	50	1,000	100 pcs	1,704.70
XL 150 Front part with Mineral fibre board	P874	10	10	910	100 pcs	1,948.86
XL 150 Front part - 68 mm	P877	10	10	1,800	100 pcs	631.07
XL 150 Front part - 75 mm	P878	10	10	1,800	100 pcs	631.07
XL 150 Front part - 85 mm	P879	10	10	1,800	100 pcs	631.07
XL 150 Front part - 80 mm	P880	10	10	1,800	100 pcs	631.07
XL 150 Front part - 90 mm	P881	10	10	1,800	100 pcs	631.07
XL 150 Front part - 95 mm	P883	10	10	1,800	100 pcs	631.07
XL 150 Front part - square 68 mm	P884	10	10	1,800	100 pcs	631.07
XL 150 Front part - square 75 mm	P885	10	10	1,800	100 pcs	631.07
XL 150 Front part - 100 mm	P903	10	10	1,800	100 pcs	631.07
XL 150 Uni-Flexx	P948	10	10	1,000	100 pcs	2,389.60
XL 200 Front part with Mineral fibre board	P875	10	10	900	100 pcs	2,146.50
XL 200 Front part - 100 mm	P886	10	10	1,120	100 pcs	861.46
XL 200 Front part - 110 mm	P887	10	10	1,120	100 pcs	861.46
XL 200 Front part - 125 mm	P888	10	10	1,120	100 pcs	861.46
XL 200 Front part - 145 mm	P889	10	10	1,120	100 pcs	861.46
XL 200 Front part - 160 mm	P890	10	10	1,120	100 pcs	861.46
XL 200 Front part - 180 mm	P891	10	10	1,120	100 pcs	861.46
XL 200 Front part - 165 mm	P892	10	10	1,120	100 pcs	861.46
XL 250 Front part with Mineral fibre board	P876	5	5	255	100 pcs	2,829.95

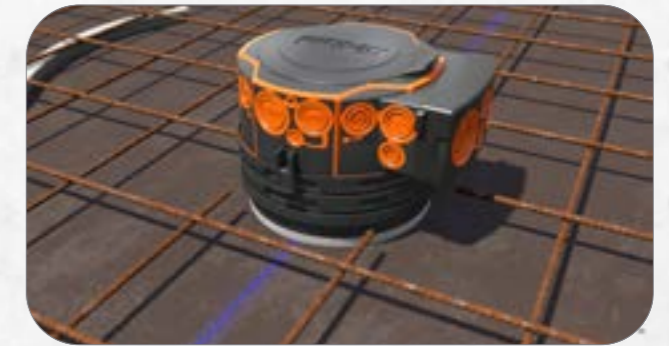
Accessories

WELL-CONCEIVED ACCESSORIES

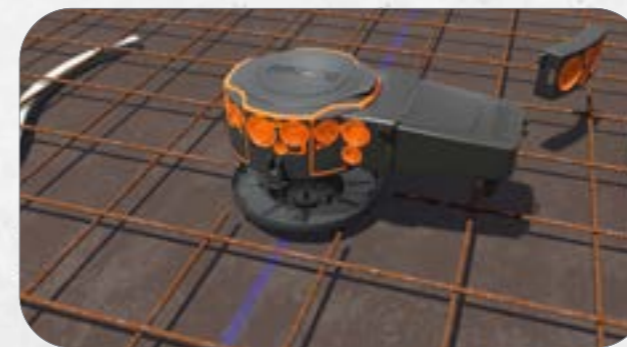
Complete flexibility



Push **Extension ring(s)** onto the Front part. An Extension ring extends the depth by 20 mm and guarantees more installation space. Several Extension rings can be combined with one another until the desired installation depth is achieved.



Push the Installation housing onto the Extension ring.



Short Tunnels can be replaced by **universal Tunnels** for additional installation space.



Optimum air circulation is still guaranteed thanks to ideal thermal management.



With the Uni-Flexx, spotlights, loudspeakers or other built-in devices can also be retrofitted in the already cast precast slab with in-situ topping. The required core drilling is much smaller and thus considerably cheaper than would otherwise be the case.



Insert **Uni-Flexx** into the drill hole and fasten to the ceiling with impact anchors. Place the XL 150 Installation housing. A tunnel can optionally be attached.

BUILDING SITE



CUSTOMER EXPERIENCES

from the building site



ITECH ELEKTRO GMBH

Walter Kunz, manager

▯▯ The system of boxes and luminaire housings with toolless entries and integrated conduit grip is very innovative. It saves us a significant amount of time. It is one of the most important factors in times where there is a shortage of skilled labour. If I haven't got anyone on the building site, it should at least be possible to save working time. ▯▯

TANGL KURT ELEKTROTECHNIK

Kurt Tangl, owner

▯▯ The entries with membrane technology make things so much easier. We usually don't have the space to open entries with pliers. Without Primo it would often have been a disaster due to the iron density. ▯▯



Scan or click for further information



END AND TRANSITION GROMMETS

With and without wings

Push-fit system

- + Connection on the end piece
- + Permanent connection

1-for-2 system: Conduit grip for two sizes

- + M20/M25 and M32/M40
- + Reduces warehousing costs
- + Perfectly concrete-tight
- + Safe strain relief
- + No reworking – no conduit cutting

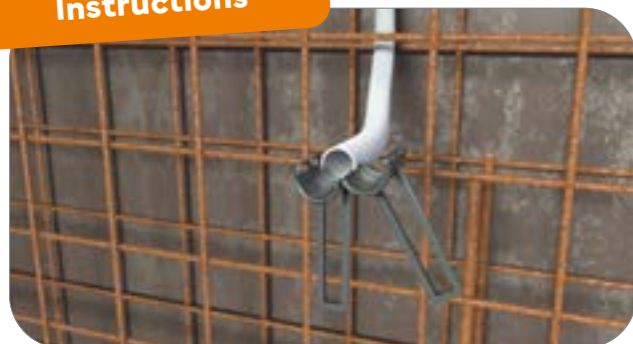
Wings

- + Versions with and without wings
- + Fastening to steel reinforcement

Concrete multi-talent

- + Ceiling or wall installation
- + Cast-in-place concrete and fair-faced concrete

Installation Instructions



Open the grommet and fasten an M20 or M25 conduit. Various conduit sizes can be combined thanks to 1-for-2 system.



Fasten grommet with wings directly to the steel reinforcement or nail with the base to the formwork. Simply open with a screwdriver after concreting.



Designation	Article no.	PU	OC	PL	Price unit	Price in €
End and transition grommets M20/M25 with wings	P753	50	200	4,800	100 pcs	233.77
End and transition grommets M20/M25	P754	50	400	9,600	100 pcs	107.85
Transition sleeve M20/M25 transparent red	P833	50	500	15,000	100 pcs	123.64

Dimensions			
Lower part (LxW)	55 x 48 mm	Wingspan	200 mm
Length of grommet	50 mm	Number of entries	1x M20 or M25 conduit
Diameter of grommet	33 mm		

WALL AND CEILING TRANSITIONS

Practical and simple – the clever 1-for-2 system

1-for-2 system: Conduit grip for two sizes

- + M20/M25 and M32/M40
- + Reduces warehousing costs
- + Perfectly concrete-tight
- + Safe strain relief
- + No reworking – no conduit cutting

Wings

- + Versions with and without wings
- + Fastening to steel reinforcement

Concrete multi-talent

- + Ceiling or wall installation
- + Cast-in-place concrete and fair-faced concrete

Push-fit system

- + Connection on the end piece
- + Permanent connection

Ideal bending radius of 30°

Installation Instructions



Nail the Front part to the formwork. The Front part can be firmly connected to other transitions and grommets thanks to the push-fit system. Push the transition onto the Front part. Ideal bending radius of 30°.



Reliably strain-relieved and perfectly concrete-tight thanks to conduit grip.



Designation	Article no.	PU	OC	PL	Price unit	Price in €
Wall and ceiling transition M20/M25	P419	50	400	9,600	100 pcs	381.41
Wall and ceiling transition 30° M32/M40 with wings	P755	25	100	2,400	100 pcs	519.49
Wall and ceiling transition 30° M32/M40	P756	50	200	4,000	100 pcs	425.04

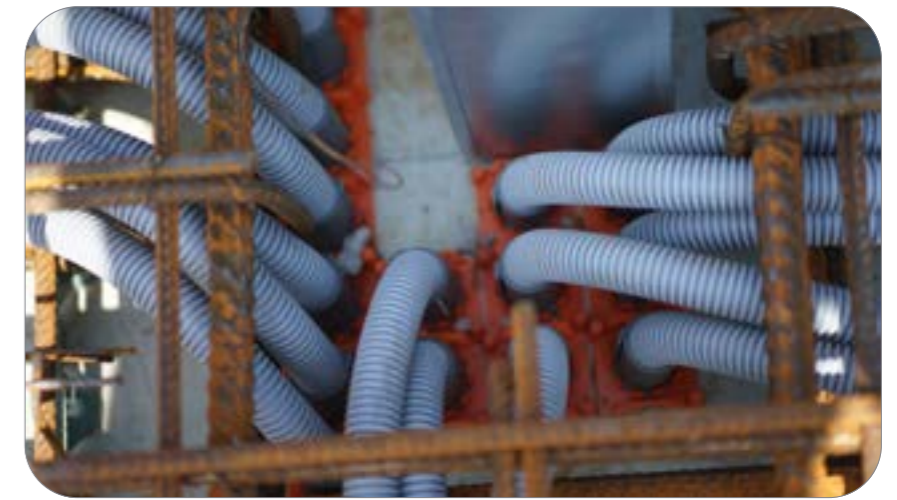
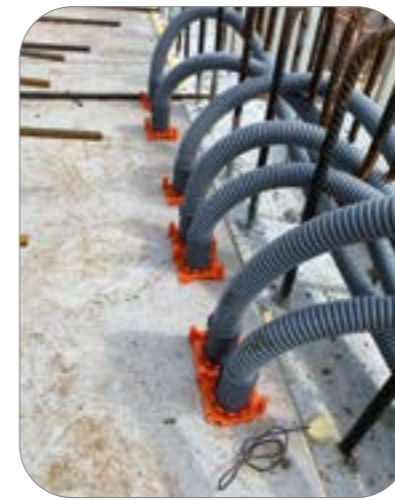
Dimensions	M20/M25	M32/M40
	Diameter of lower part	30 mm
Long transition	68 mm	79 mm
Diameter of transition	33 mm	49 mm
Number of entries	1x M20 or M25 conduit	1x for M32 or M40 conduit
Wingspan	-	210 mm

BUILDING SITE



CUSTOMER EXPERIENCES

from the building site



KLENK & MEDER ELEKTROTECHNIK

Matthias Bürgmayr, chief fitter

▭▭ The 30-degree curved transitions are very practical and really easy to process. ▭▭



C-SERIES WALL AND CEILING TRANSITIONS

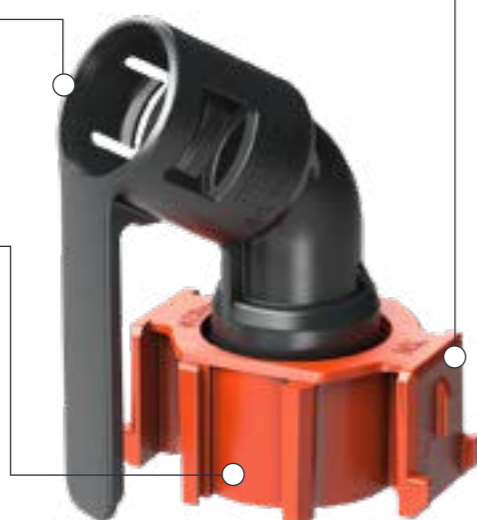
The clever connection

Smart shape

- + Ideal bending radius 30°
- + Secure and convenient pulling-in of cables
- + Support anchor for stable hold

Push-fit system

- + Connection on the end piece
- + Stable in-line connection
- + Various sizes combinable with one another
- + Combination of grommets and transitions possible



Push-on wings

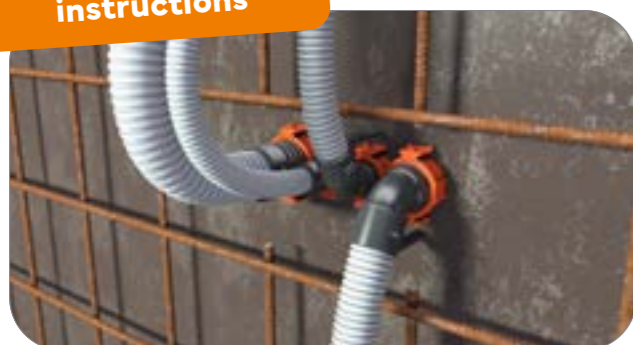
- + For fastening to steel reinforcement
- + No counter bearing or support element necessary
- + Concrete cover from 20 – 40 mm
- + Wings also usable for XL-series Installation housings, M-series Concrete boxes and Universal junction box



C25

C32

Installation instructions



Insert sleeves and transitions into the nailing base. Firm and stable combination of all sizes thanks to push-fit system. Guaranteed concrete-tight and strain-relieved connection.



Ideal bending radius of 30° for pulling cables through quickly and easily.



Designation	Article no.	PU	OC	PL	Price unit	Price in €
Wall and ceiling transition C20	P956-20-NK	50	400	9,600	100 pcs	233.28
Wall and ceiling transition C25	P956-25-NK	50	300	7,200	100 pcs	478.08
Wall and ceiling transition C32	P956-32-NK	50	300	6,000	100 pcs	478.08

Accessories	Article no.	PU	OC	PL	Price unit	Price in €
Wings for M and XL series	P761	50	500	12,000	100 pcs	60.10

Dimensions	Length	Width	Height	Wingspan
Wall and ceiling transition C20	50 mm	54 mm	70 mm	233 mm
Wall and ceiling transition C25	54 mm	59 mm	75 mm	237 mm
Wall and ceiling transition C32	62 mm	69 mm	84 mm	245 mm

C-SERIES SLEEVES AND GROMMETS

Connected quickly and simply

Simple installation

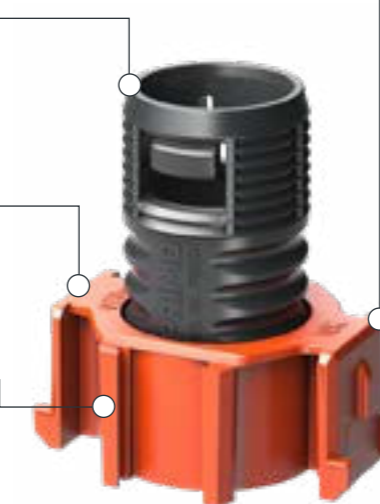
- + Time-saving nail guide
- + Large adhesive surface

Concrete multi-talent

- + Ceiling or wall installation
- + Cast-in-place concrete and fair-faced concrete

Push-fit system

- + Connection on the end piece
- + Stable in-line connection
- + Various sizes combinable with one another
- + Combination of grommets and transitions possible



Push-on wings

- + For fastening to steel reinforcement
- + No counter bearing or support element necessary
- + Concrete cover from 20 – 40 mm
- + Wings also usable for XL-series Installation housings, M-series Concrete boxes and Universal junction box



Conduit grip

- + Perfectly concrete-tight
- + Safe strain relief
- + No reworking – no conduit cutting



End and transition grommets C20 – C40

Grip type couplers C20 – C40



Designation	Article no.	PU	OC	PL	Price unit	Price in €
Grip type coupler C20	P955-20	100	1,000	24,000	100 pcs	51,52
Grip type coupler C25	P955-25	100	800	19,200	100 pcs	60,36
Grip type coupler C32	P955-32	100	500	12,000	100 pcs	109,88
Grip type coupler C40	P955-40	100	500	10,000	100 pcs	196,99
End and transition grommet C20	P955-20-NK	50	500	12,000	100 pcs	73,63
End and transition grommet C25	P955-25-NK	50	400	9,600	100 pcs	122,88
End and transition grommet C32	P955-32-NK	50	300	7,200	100 pcs	122,88
End and transition grommet C40	P955-40-NK	50	300	6,000	100 pcs	586,56

Dimensions	Length	Width	Height	External diameter	Wingspan
Grip type coupler C20			53 mm	26 mm	
Grip type coupler C25			53 mm	31 mm	
Grip type coupler C32			61 mm	38 mm	
Grip type coupler C40			61 mm	46 mm	
End and transition grommet C20	50 mm	36 mm	55 mm	26 mm	233 mm
End and transition grommet C25	54 mm	41 mm	55 mm	31 mm	237 mm
End and transition grommet C32	62 mm	48 mm	63 mm	38 mm	245 mm
End and transition grommet C40	70 mm	56 mm	63 mm	46 mm	253 mm

04



STOOLS

Scan or click
for further
information

BOHR-FIXX

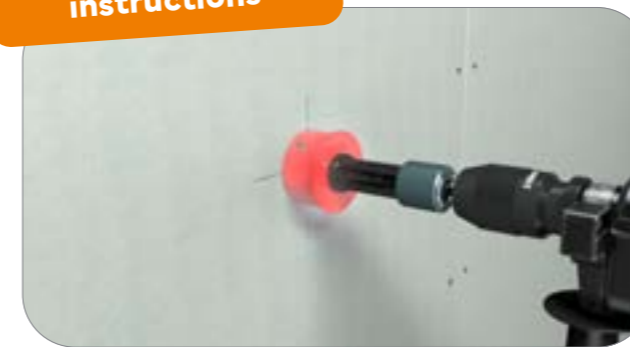
Practical holesaw holder removes the drill core semi-automatically

Benefits

- + Patented holder for holesaws from 38 mm
- + Easy exchange of the holesaw
- + Time and cost savings
- + Semi-automatic ejection function for pushing out the drill core



Installation instructions



Screw the holesaw on. If necessary, first insert the edge countersink (separately available). Patented holder for holesaws from 38 mm.



Hold the aluminium sleeve tight and eject the drill core by operating the drilling machine anticlockwise.

Designation	Article no.	PU	Price unit	Price in €
Bohr-Fixx set	P794	1	1 pc	147.89
Bohr-Fixx	P779	1	1 pc	123.66

Accessories	Article no.	PU	Price unit	Price in €
Edge countersink 68 mm	P779-02	1	1 pc	12.50
Holesaw 68 mm	P797	1	1 pc	24.60
Centring drill for Bohr-Fixx	P831	1	1 pc	3.40

DRILLING TEMPLATES

For cavity wall

- + Installation aids for 68 mm Cavity wall boxes
- + Time savings due to fast installation
- + Straight and precise drill holes
- + 5-fold combinations are possible



Scan or click
for further
information



Designation	Article no.	PU	Price unit	Price in €
Drilling template for Cavity wall box with plastic bushing	P102	1	1 pc	65.29

DRILLING TEMPLATES

For flush mounting

- + For exact drill holes in aerated concrete, brick, limestone block, full thermal protection and other brickwork
- + Time savings due to fast installation
- + Straight and precise drill holes
- + 5-fold combinations are possible



Scan or click
for further
information



Designation	Article no.	PU	Price unit	Price in €
Drilling template flush-mounting Ø 82 mm	P718	1	1 pc	190.90

LADDER SOCK

For extra work safety

- + Protects sensitive floors against scratching
- + Prevents the ladder from slipping away
- + Made of wear-resistant elastic material
- + Stretchable from 5.5 – 10 cm



Scan or click
for further
information



Designation	Article no.	PU	OC	Price unit	Price in €
Primo Ladder sock set	P153	4	50	100 pcs	378.50

HIGH-SPEED DRILL

For drill holes in record time

Benefits

- + Tool holder for commercially available accessories
- + Durable, powerful motor
- + Metal gearbox for high stability
- + Mechanical safety coupling
- + Electronic soft start
- + Switchable soft hammer



Scan or click
for further
information



Designation	Article no.	PU	Price unit	Price in €
Primo High-speed drill set "Allround"	P936	1	1 pc	919.13
Centring drill for extraction	P856	1	1 pc	24.48
Open-ended spanner	P854	1	1 pc	8.89
Extraction	P855	1	1 pc	98.38
Diamond core bit soft impact 82 mm	P851	1	1 pc	121.86
Diamond core bit 82 mm	P850	1	1 pc	89.02
SDS adapter M 16	P724	1	1 pc	57.63
Centring drill for SDS adapter	P772	1	1 pc	5.12

Scan or click
for further
information

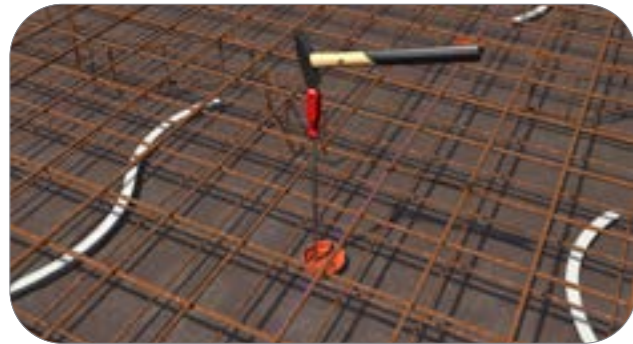


NAILER

The nailing aid for fixing concrete boxes

Benefits

- + Spacing of locating pins 60 mm – suitable for every standard box cover
- + Magnet can be reordered
- + Length 40 cm: Nailing-on of covers and boxes
- + Can also be used without holder
- + Usable for M-series, Concrete (wing) box 2.0, Universal junction box



Designation	Article no.	PU	Price unit	Price in €
Nailer	P752	1	1 pc	216.30
Accessories	Article no.	PU	Price unit	Price in €
Magnet for nailer	P752M	1	1 pc	16.20

Scan or click
for further
information



EZ 50 PULL LINE BLOWER

Stable cable network, clean conduits

Benefits

- + For cable network installers in soil, road, tunnel and bridge construction
- + For conduits with Ø 25 to 150 mm
- + Pull line strength up to 300 kg
- + Blow-in or suction without compressor
- + Retooling in just a few seconds
- + Ejects water and dirt



Standard equipment in sturdy plastic case

- + 1 EZ 50 Pull line blower
- + 2 rolls of Special line (Ø 1 mm, tensile strength approx. 24 kg, roll approx. 900 m)
- + 1 suction socket
- + 1 element set A: 2 joints ½" reduction 19/12 mm and nozzle with internal Ø 9.5 mm
- + 1 element set B: 3 joints ¾" and nozzle with internal Ø 16 mm as well as internal Ø 19 mm
- + 1 special nozzle, black, for internal conduit Ø from 25 to 50 mm
- + 1 plug-in nozzle with elbow 90°, external Ø 12 mm (only in connection with special nozzle, black)
- + 3 x 3 beads round Ø 11, 13 and 16 mm
- + 1 user manual

Designation	Article no.	PU	Price unit	Price in €
EZ 50 Pull line blower with accessories in case	P042	1	1 pc	1,756.91
Special line small, tensile force 24 kg, 900 m	P043	10	1 pc	21.37
EZ 100 Pull line blower with accessories in case	P068	1	1 pc	3,623.20

LIST OF KEYWORDS

A

Adhesive disc 18, 19, 20, 21

B

Bohr-Fixx 57

Bohr-Fixx set 57

C

Cable holder incl. Adhesive disc 20, 21

Centring drill for extraction 59

Centring drill for Bohr-Fixx 57

Centring drill for SDS adapter 59

Concrete box 2.0 36

Concrete wing box 2.0 37

D

Diamond core bit 82 mm 59

Diamond core bit soft impact 82 mm 59

Dividing web U60/U70 34

Drill cover 18, 19

Drilling template for Cavity wall box 20, 58

Drilling template flush-mounting Ø 82 mm 8, 10, 58

E

Edge countersink 68 mm 57

End and transition grommet C20 55

End and transition grommet C25 55

End and transition grommet C32 55

End and transition grommet C40 55

End and transition grommet M20/M25 50

End and transition grommets M20/M25 with wings 50

Equipment carrier GET-80 8, 17, 23

Extraction 59

EZ 100 Pull line blower with accessories in case 61

EZ 50 Pull line blower with accessories in case 61

G

Grip type coupler C20 55

Grip type coupler C25 55

Grip type coupler C32 55

Grip type coupler C40 55

H

Holesaw 68 mm 57

L

Ladder sock 58

M

Magnet for nailer 60

Membrane box M1 35 (with 35 mm luminaire outlet) 26

Membrane box M1 60 25, 26, 28, 33, 46

Membrane box M1 CEE 30, 31

Membrane box M2 35 (with 35 mm luminaire outlet) 26

Membrane box M2 60 26, 28

Membrane box M3 35 (with 35 mm luminaire outlet) 26

Membrane box M3 60 26, 28

Multi box 18, 19

N

Nailer for concrete construction products 26, 27, 34, 36, 41, 60

O

Open-ended spanner 59

P

Pistol for Primo Thermo foam 8, 10, 12

Primo High-speed drill 10, 45, 54, 59

Primo High-speed drill set „Allround“ 59

Primoclip 22

Push-on frame for Membrane box M1 26, 27

S

SDS adapter M 16 59

Signal pin 18, 19

Special line small, tensile force 24 kg, 900 m 61

T

Thermo box TED-70 8, 9

Thermo box THD-45 8, 9

Thermo box THD-70 7, 8, 9, 10, 12, 15, 17

Thermo foam 750ml 8, 10, 12

Transition sleeve M20/M25 50

U

Uni-Flexx for XL 150 44, 45, 46, 47, 49

Universal junction box for concrete 34

Universal junction box U60 3-part 34

Universal junction box U70 3-part 34

Universal plaster cover 8, 11, 13, 16

W

Wall and ceiling transition 30° M32/M40 51

Wall and ceiling transition 30° M32/M40 with wings 51

Wall and ceiling transition C20 54

Wall and ceiling transition C25 54

Wall and ceiling transition C32 54

Wall and ceiling transition M20/M25 51

Wingsfor M and XL series 26, 28, 34, 42, 46, 52/53

X

XL 150 Installation housing 39, 40, 48, 49

XL 150 Front part - 100 mm 46

XL 150 Front part - 68 mm 46

XL 150 Front part - 75 mm 46

XL 150 Front part - 80 mm 46

XL 150 Front part - 85 mm 46

XL 150 Front part - 90 mm 46

XL 150 Front part - 95 mm 46

XL 150 Front part - square 68 mm 46

XL 150 Front part - square 75 mm 46

XL 150 Extension ring 46

XL 150/200/250 Tunnel 41, 42, 44, 45, 46, 47

XL 200 Installation housing 40, 48, 49

XL 200 Front part - 100 mm 46

XL 200 Front part - 110 mm 46

XL 200 Front part - 125 mm 46

XL 200 Front part - 145 mm 46

XL 200 Front part - 160 mm 46

XL 200 Front part - 165 mm 46

XL 200 Front part - 180 mm 46

XL 200 Front part with Mineral fibre board 46

XL 200 Extension ring 46

XL 250 Installation housing 40

XL 250 Front part with Mineral fibre board 46

LIST OF ARTICLE NUMBERS

P001	20	P854	59
P002	18	P855	59
P003	18	P856	59
P004	18	P870	40, 44
P005	18, 20	P871	40
P042	61	P872	40
P043	61	P873	44, 46
P068	61	P874	46
P076	22	P875	46
P102	20, 58	P876	46
P153	58	P877	46
P419	51	P878	46
P421	34	P879	46
P421-60-3	34	P880	46
P421-70-3	34	P881	46
P421-T	34	P883	46
P717	8	P884	46
P718	8, 58	P885	46
P719	8	P886	46
P722	8, 16	P887	46
P724	59	P888	46
P726	8	P889	46
P730	37	P890	46
P731	36	P891	46
P752	26, 34, 36, 37, 60	P892	46
P752M	60	P903	46
P753	50	P906	46
P754	50	P907	46
P755	51	P912	26
P756	51	P913	26
P760	26	P914	26
P761	26, 34, 46, 54	P915	26
P762	26	P936	59
P763	26	P948	44, 46
P772	59	P953	30
P773	8, 17, 26	P955-20	55
P774	8	P955-20-NK	55
P775	8	P955-25	55
P779	57	P955-25-NK	55
P779-02	57	P955-32	55
P794	57	P955-32-NK	55
P797	57	P955-40	55
P831	57	P955-40-NK	55
P833	50	P956-20-NK	54
P850	59	P956-25-NK	54
P851	59	P956-32-NK	54

YOUR NOTES

OUR GENERAL TERMS AND CONDITIONS

Delivery

Free delivery throughout Germany, excluding islands, from a net goods value of € 500. Shipping on enquiry in case of net goods values of less than € 500 and shipping to foreign countries. Deliveries to tradespersons and contractors only.

Goods returns

An exchange or a return shall only come about if the customer bears the associated transport costs and agrees in the case of a return to a handling fee of 20% of the net invoice amount.

Business hours

Telephone orders Mon – Thu from 8.00 – 17.00, Fri from 8.00 – 15.00

For orders:

Bestellung@primo-gmbh.com

For complaints:

Kundenservice@primo-gmbh.com

For tenders:

Ausschreibung@primo-gmbh.com

General enquiries:

Info@primo-gmbh.com

Terms of payment, Germany

Invoices shall be settled within 14 days without deduction unless other terms of payment have been agreed.

Prices

The gross prices are non-binding recommended prices excl. VAT. Subject to intermediate sale. On publication of this edition, all previous editions of our price lists cease to be valid.

Current price changes and news online: www.primo-gmbh.com

Subject to changes in the product range, technical changes, errors and delivery options.

Retention of title

Primo GmbH has the right to retention of title and extended retention of title for all goods, including previously delivered goods, until full payment has been made of all receivables.

Place of jurisdiction

The place of jurisdiction for the goods delivered by us is Mühldorf am Inn.

The General Terms and Conditions printed in full at www.primo-gmbh.com are deemed to be agreed.

Imprint

Primo GmbH
Wernher-von-Braun-Str. 2

84544 Aschau am Inn

Phone: +49 8638 / 88 55 92 00
Fax: +49 8638 / 88 55 92 99

Email: info@primo-gmbh.com
www.primo-gmbh.com

Traunstein Register of Companies
HRB 16388
VAT Reg. No. DE 814 418 088

Delivery address

Primo GmbH:

Wernher-von-Braun-Str. 2
84544 Aschau am Inn

FAST. SIMPLE. PRIMO.

PRIMO®

Primo GmbH | www.primo-gmbh.com | Wernher-von-Braun-Str. 2 | 84544 Aschau
Tel. +49 8638 88559-200 | Fax +49 8638 88559-299 | info@primo-gmbh.com

DATED 07/2024 | Subject to changes | The gross prices stated are non-binding recommended prices excl. VAT and are only valid in Germany. On publication of this edition, all previous editions cease to be valid.

