



Product features

Shape	Octagonal
Length	110 mm
Wide	75 mm
Depth	85 mm
Installation opening	60 mm
Wingspan	300mm
Colour	Anthracite-orange
Type of insertions	Cables and conduits
Combined insertions with strain relief	2x M15; 4x M15/M20/M25; 2 x M15/M20/M25/M32
insertions from the back without strain relief	2 x M15/M20/M32 2 x M12
Integrated strain relief	Yes
Stackable	Yes
Screw bosses	4
Sound protection	No
Airtight	Yes
Thermal bridge free	No
Cable transition	Fully insulated
Concrete cover	20-40 mm or 40-60 mm
Counter bearing necessary?	No
Concrete-tight	Yes
Temperature resistant	- 5 to +100 °C

5-in-1: Junction box, concrete wing box, ceiling junction box, M32 large diameter conduit box and electronics box

- **Membrane technology with conduit grip**
 - » Toolless combination insertion M20 - M32
 - » Insertion of cables is possible
 - » Concrete-tight
 - » Integrated strain relief
 - » No rework - cutting conduits not necessary
- **SCS connection technology**
 - » Strong connection
 - » Easy through-wiring
 - » Simple installation of prewired devices
 - » Combination spacing of 71 mm
- **Attachable wings**
 - » For fastening the box to steel reinforcements
 - » Standard spacing of 15 cm to door shuttering
 - » No counter bearing oder support element necessary
 - » For concrete coverings of 20 - 60 mm
- **Membrane sealing edge**
 - » Clean finish
 - » Ideal for fair-faced concrete
 - » Prevents concrete residuals from entering
- **Luminaire hooks**
 - » max. load according to DIN EN 60670 release 100N (10kg)

Series	M-series
Article No.	P760
Category	Concrete installation
Type of installation	Wings, glue, magnet, nails
Use	cast-in-place concrete, prefabrication
EAN	4260182064764

Material properties

Housing material	PP
Membrane material	TPE



Product features

Shape	Octagonal
Length	110 mm
Wide	80 mm
Depth	85 mm
Widespan	300mm
Installation opening	35 mm
Colour	Anthracite-orange
Type of insertions	Cables and conduits
Combined insertions with strain relief	2x M15; 4x M15/M20/M25 2x M15/M20/M25/M32
insertions from the back without strain relief	2 x M15/M20/M25 2 x M12
Integrated strain relief	Yes
Stackable	Yes
Screw bosses	4
Sound protection	No
Airtight	Yes
Thermal bridge free	No
Cable transition	Fully insulated
Concrete cover	20-40 mm or 40-60 mm
Counter bearing necessary?	No
Concrete-tight	Yes
Temperature resistant	- 5 to +100 °C
Magnet included	No

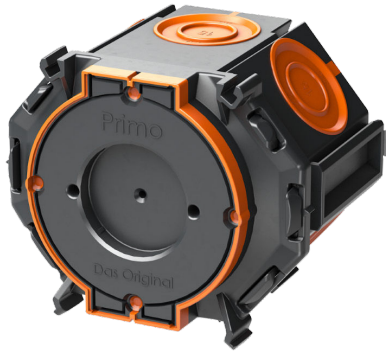
5-in-1: Junction box, concrete wing box, ceiling junction box, M32 large diameter conduit box and electronics box

- **Membrane technology with conduit grip**
 - » Toolless combination insertion M20 - M32
 - » Insertion of cables is possible
 - » Concrete-tight
 - » Integrated strain relief
 - » No rework - cutting conduits not necessary
- **SCS connection technology**
 - » Strong connection
 - » Easy through-wiring
 - » Simple installation of prewired devices
 - » Combination spacing of 71 mm
- **Attachable wings**
 - » For fastening the box to steel reinforcements
 - » Standard spacing of 15 cm to door shuttering
 - » No counter bearing oder support element necessary
 - » For concrete coverings of 20 - 60 mm
- **Compact structure**
 - » Structural stability is not impaired
 - » For confined conditions with lots of reinforcement
- **Membrane sealing edge**
 - » Clean finish
 - » Ideal for fair-faced concrete
 - » Prevents concrete residuals from entering
- **Luminaire hooks**
 - » max. load according to DIN EN 60670 release 100N (10kg)

Series	M-series
Article No.	P763
Category	Concrete installation
Type of installation	Wings, glue, magnet, nails
Use	cast-in-place concrete, prefabrication
EAN	4260182065235

Material properties

Housing material	PP
Membrane material	TPE



Product features

Shape	Octagonal
Length	90 mm
Wide	75 mm
Depth	48 mm
Installation opening	60 mm
Wingspan	280 mm
Colour	Anthracite-orange
Type of insertions	Cables and conduits
Combined insertions with strain relief	6 x M15 /M20 / M25
insertions from the back without strain relief	1 x M25 / M32 2 x M12
Integrated strain relief	Yes
Stackable	Yes
Screw bosses	4
Sound protection	No
Airtight	Yes
Thermal bridge free	No
Cable transition	Fully insulated
Concrete cover	20-40 mm or 40-60 mm
Counter bearing necessary?	No
Concrete-tight	Yes
Temperature resistant	- 5 to +100 °C

3-in-1: Junction box, concrete wing box and M32 large diameter conduit box

- **Membrane technology with conduit grip**
 - » Toolless combination insertion M20 - M32
 - » Insertion of cables is possible
 - » Concrete-tight
 - » Integrated strain relief
 - » No rework - cutting conduits not necessary
- **SCS connection technology**
 - » Strong connection
 - » Easy through-wiring
 - » Simple installation of prewired devices
 - » Combination spacing of 71 mm
- **Attachable wings**
 - » For fastening the box to steel reinforcements
 - » Standard spacing of 15 cm to door shuttering
 - » No counter bearing oder support element necessary
 - » For concrete coverings of 20 - 60 mm
- **Compact structure**
 - » Structural stability is not impaired
 - » For confined conditions with lots of reinforcement
- **Membrane sealing edge**
 - » Clean finish
 - » Ideal for fair-faced concrete
 - » Prevents concrete residuals from entering

Series	M-series
Article No.	P914
Category	Concrete installation
Type of installation	Wings, glue, magnet, nails
Use	cast-in-place concrete, prefabrication
EAN	4260182065631

Material properties

Housing material	PP
Membrane material	TPE



Product features

Shape	Octagonal
Length	90 mm
Wide	75 mm
Depth	48 mm
Installation opening	35 mm
Wingspan	280 mm
Colour	Anthracite-orange
Type of insertions	Cables and conduits
Combined insertions with strain relief	6 x M15 / M20 / M25
insertions from the back without strain relief	1 x M25 / M32 2 x M12
Integrated strain relief	Yes
Stackable	Yes
Screw bosses	4
Sound protection	No
Airtight	Yes
Thermal bridge free	No
Cable transition	Fully insulated
Concrete cover	20-40 mm or 40-60 mm
Counter bearing necessary?	No
Concrete-tight	Yes
Temperature resistant	- 5 to +100 °C

3-in-1: Junction box, concrete wing box and M32 large diameter conduit box (lamp outlet 35 mm)

- **Membrane technology with conduit grip**
 - » Toolless combination insertion M20 - M32
 - » Insertion of cables is possible
 - » Concrete-tight
 - » Integrated strain relief
 - » No rework - cutting conduits not necessary
- **SCS connection technology**
 - » Strong connection
 - » Easy through-wiring
 - » Simple installation of prewired devices
 - » Combination spacing of 71 mm
- **Attachable wings**
 - » For fastening the box to steel reinforcements
 - » Standard spacing of 15 cm to door shuttering
 - » No counter bearing oder support element necessary
 - » For concrete coverings of 20 - 60 mm
- **Compact structure**
 - » Structural stability is not impaired
 - » For confined conditions with lots of reinforcement
- **Membrane sealing edge**
 - » Clean finish
 - » Ideal for fair-faced concrete
 - » Prevents concrete residuals from entering

Series	M-series
Article No.	P915
Category	Concrete installation
Type of installation	Wings, glue, magnet, nails
Use	cast-in-place concrete, prefabrication
EAN	4260182065648

Material properties

Housing material	PP
Membrane material	TPE



Product features

Shape	Octagonal
Length	90 mm
Wide	75 mm
Depth	48 mm
Installation opening	60 mm
Wingspan	280 mm
Colour	Anthracite-orange
Type of insertions	Cables and conduits
Combined insertions with strain relief	6 x M 15 / M20 / M25
insertions from the back without strain relief	1 x M25 / M32 2 x M12
Integrated strain relief	Yes
Stackable	Yes
Screw bosses	4
Sound protection	No
Airtight	Yes
Thermal bridge free	No
Cable transition	Fully insulated
Concrete cover	20-40 mm or 40-60 mm
Counter bearing necessary?	No
Concrete-tight	Yes
Temperature resistant	- 5 to +100 °C

3-in-1: Junction box, concrete wing box and M32 large diameter conduit box

- **Membrane technology with conduit grip**
 - » Toolless combination insertion M20 - M32
 - » Insertion of cables is possible
 - » Concrete-tight
 - » Integrated strain relief
 - » No rework - cutting conduits not necessary
- **SCS connection technology**
 - » Strong connection
 - » Easy through-wiring
 - » Simple installation of prewired devices
 - » Combination spacing of 71 mm
- **Attachable wings**
 - » For fastening the box to steel reinforcements
 - » Standard spacing of 15 cm to door shuttering
 - » No counter bearing oder support element necessary
 - » For concrete coverings of 20 - 60 mm
- **Compact structure**
 - » Structural stability is not impaired
 - » For confined conditions with lots of reinforcement
- **Membrane sealing edge**
 - » Clean finish
 - » Ideal for fair-faced concrete
 - » Prevents concrete residuals from entering

Series	M-series
Article No.	P912
Category	Concrete installation
Type of installation	Wings, glue, magnet, nails
Use	cast-in-place concrete, prefabrication
EAN	4260182065617

Material properties

Housing material	PP
Membrane material	TPE



Product features

Shape	Octagonal
Length	90 mm
Wide	80 mm
Depth	48 mm
Installation opening	35 mm
Colour	Anthracite-orange
Type of insertions	Cables and conduits
Combined insertions with strain relief	6 x M20 / M25
insertions from the back without strain relief	1 x M25 / M32 2 x M15
Integrated strain relief	Yes
Stackable	Yes
Screw bosses	4
Sound protection	No
Airtight	Yes
Thermal bridge free	No
Cable transition	Fully insulated
Concrete cover	20-40 mm or 40-60 mm
Counter bearing necessary?	No
Concrete-tight	Yes
Temperature resistant	- 5 to +100 °C

3-in-1: Junction box, concrete wing box and M32 large diameter conduit box (lamp outlet 35 mm)

- **Membrane technology with conduit grip**
 - » Toolless combination insertion M20 - M32
 - » Insertion of cables is possible
 - » Concrete-tight
 - » Integrated strain relief
 - » No rework - cutting conduits not necessary
- **SCS connection technology**
 - » Strong connection
 - » Easy through-wiring
 - » Simple installation of prewired devices
 - » Combination spacing of 71 mm
- **Attachable wings**
 - » For fastening the box to steel reinforcements
 - » Standard spacing of 15 cm to door shuttering
 - » No counter bearing oder support element necessary
 - » For concrete coverings of 20 - 60 mm
- **Compact structure**
 - » Structural stability is not impaired
 - » For confined conditions with lots of reinforcement
- **Membrane sealing edge**
 - » Clean finish
 - » Ideal for fair-faced concrete
 - » Prevents concrete residuals from entering

Series	M-series
Article No.	P913
Category	Concrete installation
Type of installation	Wings, glue, magnet, nails
Use	cast-in-place concrete, prefabrication
EAN	4260182065624

Material properties

Housing material	PP
Membrane material	TPE