



#### Product features

Height (extendable)	130 - 230 mm
Waterproof	Yes
Ph-neutral	Yes

#### Schalfix 140 x 160 mm - Time saving of up to one hour per recess

- » No more tinkering with a recess
- » Water- and concrete-tight standard recess
- » Individually adapt to ceiling thickness
- » Nail, glue or attach with magnet to formwork
- » 260x240 or 140x160 mm variant
- » Several Schalfix can be combined for larger recesses

Series	-
Article No.	P796
Category	Concrete installation
Type of installation	Magnet, nail, glue
Use	Cast-in-place concrete, prefabrication
EAN	4260182063729

#### Material properties

Material	PP-HNP
----------	--------



#### Product features

Height (extendable)	130 - 230 mm
Waterproof	Yes
Ph-neutral	Yes

#### Schalfix 240 x 260 mm - Time saving of up to one hour per recess

- » No more tinkering with a recess
- » Water- and concrete-tight standard recess
- » Individually adapt to ceiling thickness
- » Nail, glue or attach with magnet to formwork
- » 260x240 or 140x160 mm variant
- » Several Schalfix can be combined for larger recesses

Series	-
Article No.	P807
Category	Concrete installation
Type of installation	Magnet, nail, glue
Use	Cast-in-place concrete, prefabrication
EAN	4260182064368

#### Material properties

Material	PP-HNP
----------	--------



## Ventilation sleeve - Up to 30 min time saving per recess

- » For cast-in-place concrete or prefabrication
- » Screw domes for ventilation plates integrated
- » Direct connection of standardized vents, Ø 125 mm
- » With or without magnet fastening
- » No more tinkering with recesses



### Product features

Diameter outside	138 mm
Diameter inside	135 mm
Predetermined breaking point cover for poppet valve	135 mm
Distance screw domes for poppet valve	102 mm
Height	90 mm
Color	orange
Diameter of visible area	155 mm

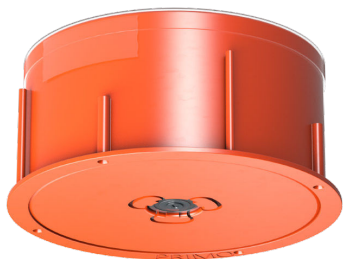
Series	-
Article No.	P827
Category	Concrete installation
Type of installation	Nail, glue
Use	cast-in-place concrete, prefabrication
EAN	4260182064450

### Material properties

Material	PP
----------	----

### possible manufacturer for use

Helios Ventilatoren GmbH + Co KG
Zehnder Group AG
Maico Elektroapparate-Fabrik GmbH
Kermi GmbH
Systemair GmbH
Wolf GmbH



**Product features**

Diameter outside	138 mm
Diameter inside	135 mm
Predetermined breaking point cover for poppet valve	135 mm
Distance screw domes for poppet valve	102 mm
Height	90 mm
Color	orange
Magnet diameter	32 mm
Magnet incl.	Yes
Diameter of visible area	155 mm

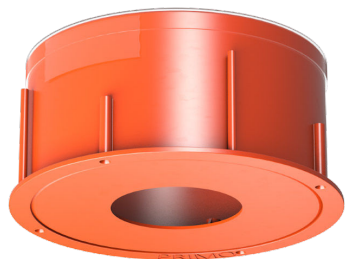
**Ventilation sleeve with magnet - Up to 30 min time saving per recess**

- » For cast-in-place concrete or prefabrication
- » Screw domes for ventilation plates integrated
- » Direct connection of standardized vents, Ø 125 mm
- » With or without magnet fastening
- » No more tinkering with recesses

Series	-
Article No.	P828
Category	Concrete installation
Type of installation	Nail, glue
Use	cast-in-place concrete, prefabrication
EAN	4260182064467

**Material properties**

Material	PP
----------	----



**Ventilation sleeve for magnet mounting - Up to 30 min time saving per recess**

- » For cast-in-place concrete or prefabrication
- » Screw domes for ventilation plates integrated
- » Direct connection of standardized vents, Ø 125 mm
- » With or without magnet fastening
- » No more tinkering with recesses



**Product features**

Diameter outside	138 mm
Diameter inside	135 mm
Predetermined breaking point cover for poppet valve	135 mm
Distance screw domes for poppet valve	102 mm
Height	90 mm
Color	orange
For magnet diameter	60 mm
Magnet incl.	No
Diameter of visible area	155 mm

Series	-
Article No.	P829
Category	Concrete installation
Type of installation	Nail, glue
Use	cast-in-place concrete, prefabrication
EAN	4260182064474

**Material properties**

Material	PP
----------	----